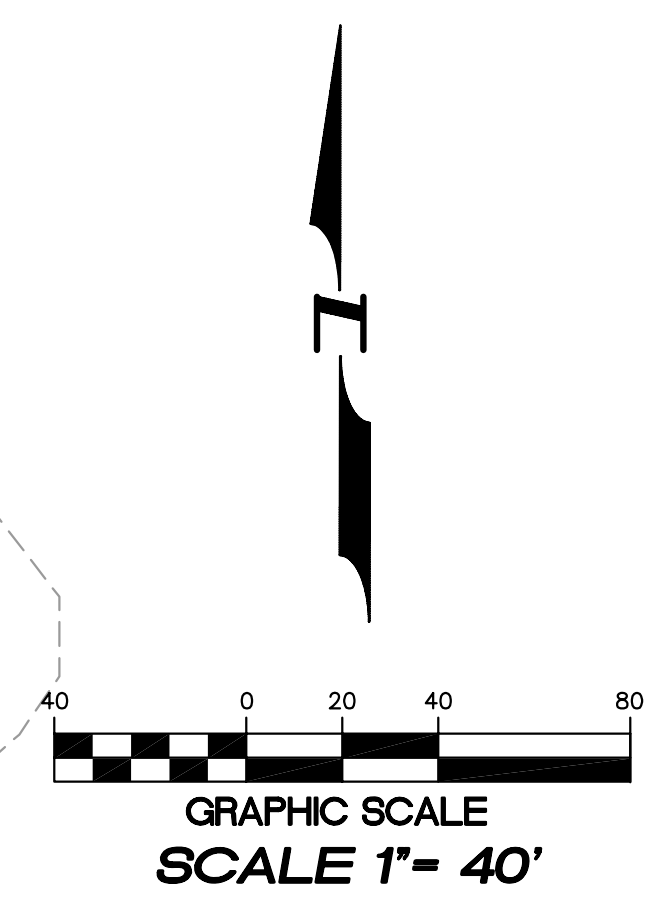
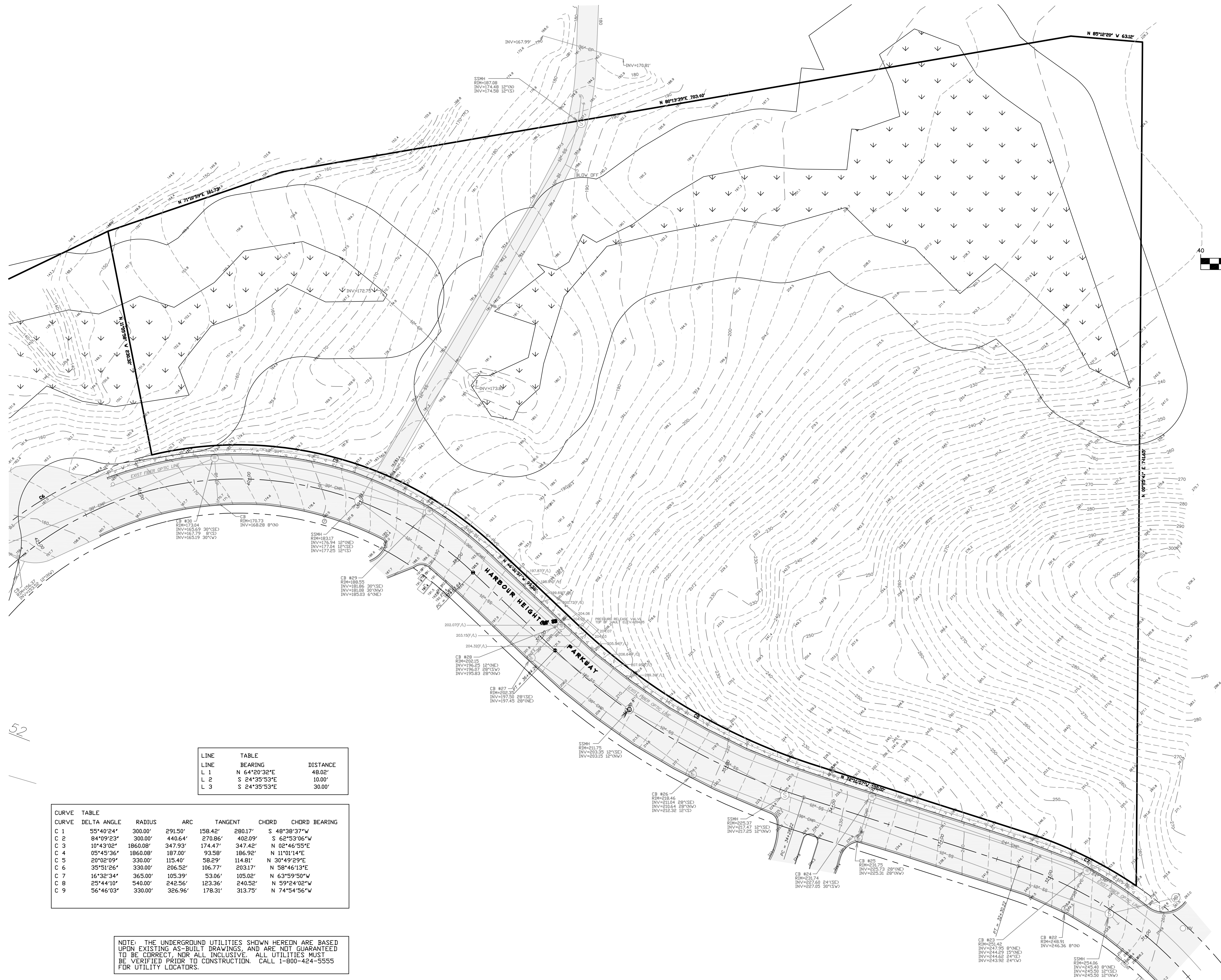


SEC. 20, T. 28 N., R. 4 E., W.M.



BASIS OF BEARINGS:
 HARBOR POINTE SECTOR 11
 BUSINESS PARK AF# 870215001.
 VERTICAL DATUM:
 OLYMPIC TERRACE SEWER DISTRICT DATUM
 SITE BENCH MARK: TOP OF P.C. MONUMENT IN CASE
 IN CENTER OF HARBOR HEIGHTS PARKWAY.
 ELEVATION = 193.47 FEET.
 (REFERENCE HARBOR POINTE SECTOR 11 BUSINESS PARK
 ROAD AND STORM DRAINAGE SYSTEM CONSTRUCTION PLAN
 BY NORTHWEST ENGINEERING COMPANY APPROVED 1/12/87.)

LEGEND:

- SD = STORM DRAIN
- SS = SANITARY SEWER
- = WATER LINE
- = FIRE HYDRANT
- = CATCH BASIN
- = WATER METER
- = MANHOLE
- = UTILITY POLE
- = LIGHT POLE
- = FND. MON. IN CASE
- = FND. PROP. CDR. AS NOTED.
- = SET 1/2" I.R. W/CAP # 21464.
- = POWER VA
- = TELE./TV PED.

LINE	BEARING	DISTANCE
L 1	N 64°20'32"E	48.02'
L 2	S 24°35'53"E	10.00'
L 3	S 24°35'53"E	30.00'

CURVE	DELTA ANGLE	RADIUS	ARC	TANGENT	CHORD	CHORD BEARING
C 1	55°40'24"	300.00'	291.50'	158.42'	280.17'	S 48°38'37"W
C 2	84°09'23"	300.00'	440.64'	270.86'	402.09'	S 62°53'06"W
C 3	10°43'02"	1860.08'	347.93'	174.47'	347.42'	N 02°46'55"E
C 4	05°45'36"	1860.08'	187.00'	93.58'	186.92'	N 11°01'14"E
C 5	20°02'09"	330.00'	115.40'	58.29'	114.81'	N 30°49'29"E
C 6	35°51'26"	330.00'	206.52'	106.77'	203.17'	N 58°46'13"E
C 7	16°32'34"	365.00'	105.39'	53.06'	105.02'	N 63°59'50"W
C 8	25°44'10"	540.00'	242.56'	123.36'	240.52'	N 59°24'02"W
C 9	56°46'03"	330.00'	326.96'	178.31'	313.75'	N 74°54'56"W

NOTE: THE UNDERGROUND UTILITIES SHOWN HEREON ARE BASED UPON EXISTING AS-BUILT DRAWINGS, AND ARE NOT GUARANTEED TO BE CORRECT, NOR ALL INCLUSIVE. ALL UTILITIES MUST BE VERIFIED PRIOR TO CONSTRUCTION. CALL 1-800-424-5555 FOR UTILITY LOCATORS.

EXISTING CONDITIONS
 03002EX01.DWG
C20

DATE		REVISIONS			
NO.					
HANSEN SURVEYING LAND SURVEYORS & CONSULTANTS 16710 116TH AVE. SE., SUITE A-4, RENTON, WA 98058 TEL: 425-235-8440 FAX: 425-235-0266					
WESTRIDGE (SECTOR 11 PHASE II) TOP OF SLOPE SURVEY					
MUKILTEO, WASHINGTON					
DATE:	1/11/03	DRAWN BY:	PJC	CHKD BY:	RGH
SHEET	1	OF	1		
JOB NUMBER 20305					