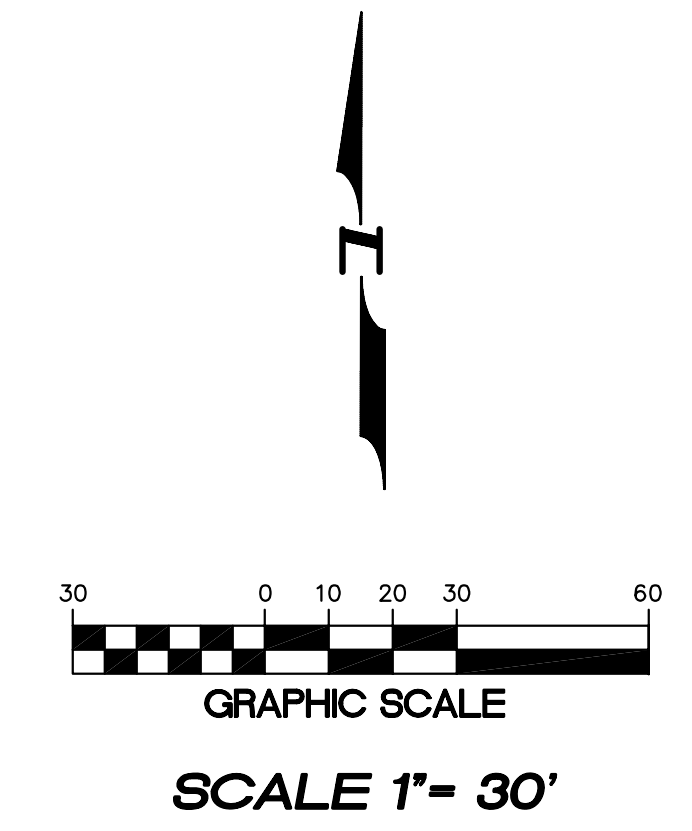
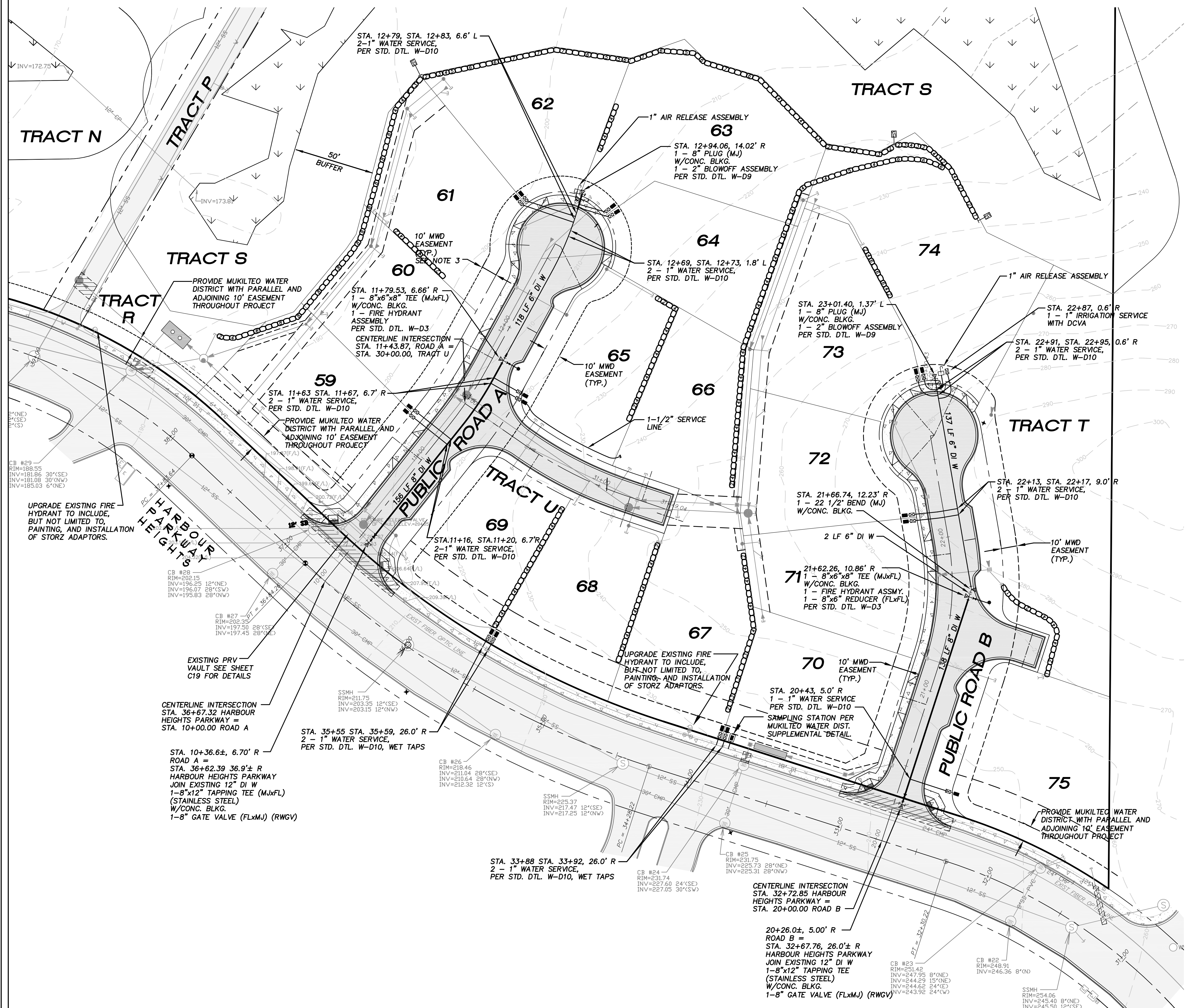


SEC. 20, T. 28 N., R. 4 E., W.M.



**HORIZONTAL DATUM :**  
 HARBOUR POINTE SECTOR 11 BUSINESS PARK AF# 8702115001

**BASIS OF BEARINGS :**  
 HARBOUR POINTE SECTOR 11 BUSINESS PARK AF# 8702115001

**VERTICAL DATUM :**  
 OLYMPUS TERRACE SEWER DISTRICT DATUM SITE BENCH MARK :  
 TOP OF P.C. MONUMENT IN CASE IN CENTER OF HARBOUR  
 HEIGHTS PARKWAY.  
 ELEVATION = 193.47 FEET.  
 (REFERENCE HARBOUR POINTE SECTOR 11 BUSINESS PARK  
 ROAD AND STORM DRAINAGE SYSTEM CONSTRUCTION PLAN  
 BY NORTHWEST ENGINEERING COMPANY APPROVED 1/27/87.)

**LEGEND**

|  |  |
|--|--|
|  | SANITARY SEWER CLEANOUT<br>PER DTL. 1, SHT. C15                        |
|  | SANITARY SEWER MANHOLE<br>PER DTL. 3 AND 4, SHT. C15                   |
|  | CAP, SANITARY SEWER SIDE SERVICE<br>W/MARKER POST PER DTL. 5, SHT. C15 |
|  | FIRE HYDRANT ASSEMBLY<br>PER DTL. W-D3, SHT. C18A                      |
|  | CAP, WATER MAIN<br>W/2" AIR VAC. ASSEMBLY<br>PER DTL. W-D6, SHT. C18A  |
|  | 1" WATER SERVICE<br>PER DTL. W-D8, W-D9<br>AND W-D10, SHT. C18B        |
|  | 22 1/2" ELBOW<br>PER DTL. W-D11, SHT. C18B                             |
|  | TEE W/GATE VALVE<br>PER DTL. W-D11, SHT. C18B                          |
|  | CB TYPE I<br>PER DTL. 1 AND 4, SHT. C11                                |
|  | CB TYPE I W/SOLID LOCKING LID<br>PER DTL. 1 AND 5, SHT. C11            |
|  | CB TYPE II<br>PER DTL. 3 AND 4, SHT. C11                               |
|  | CB TYPE II W/SOLID LOCKING LID<br>PER DTL. 3 AND, SHT. C11             |
|  | STORM DRAIN CLEANOUT (AS NOTED)<br>PER DTL. 9, SHT. C10                |
|  | CAP, STORM DRAIN SIDE SERVICE<br>W/MARKER POST PER DTL. 7, SHT. C10    |

- NOTES**
1. ALL PIPES AND FITTINGS SHALL BE RESTRAINED JOINT THROUGHOUT PROJECT.
  2. ALL SERVICES SHALL BE 1" COPPER PER LOT.
  3. PROVIDE 10' PARALLEL AND ADJOINING EASEMENTS ALONG PUBLIC RIGHT-OF-WAY FOR MUKILTEO WATER DISTRICT.

Approved by: \_\_\_\_\_ Date \_\_\_\_\_  
 Mukilteo Water District Extention No. 347

Gray & Osborne No. 03670

Project must be completed within one (1) year from the date of approval. In the event that the project developer fails to do so, the project will be subject to reapplication, additional plan review and revision, due to any changes in District standards or requirements occurring prior to completion. Water service is available only after payment of all current fees.



4180 LIND AVE. S.W.  
 RENTON, WA 98055  
 PHONE: (425) 251-8811  
 FAX: (425) 251-8880  
 WEB SITE: PACENG.COM

**Pacific Engineering Design, LLC**  
 Civil Engineering and Planning Consultants

**WESTRIDGE (SECTOR 11 PHASE II)**  
 MUKILTEO, WA.

FOR THE BURNEARDS  
 1215 120TH AVENUE NE SUITE 201  
 BELLEVUE, WA 98055-2135  
 PHONE: (425) 454-1900 FAX: (425) 454-4543

PROJECT NO.: 03002  
 DRAWN BY: JGC  
 ISSUE DATE: 02-28-03  
 SHEET REV.: 09-30-04

**MUKILTEO WATER DISTRICT WATER PLAN**

03002WA01.DWG  
**C16**