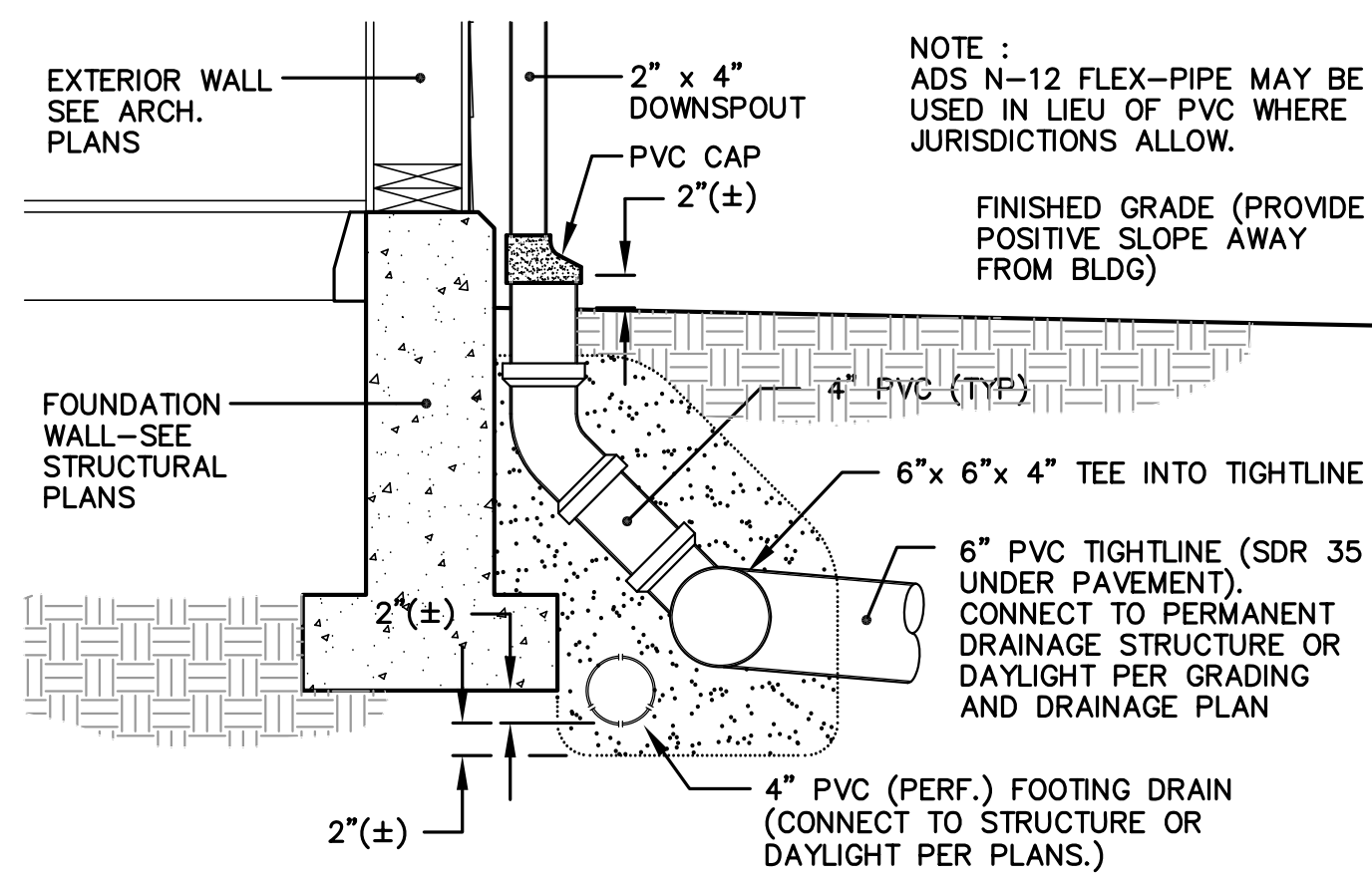
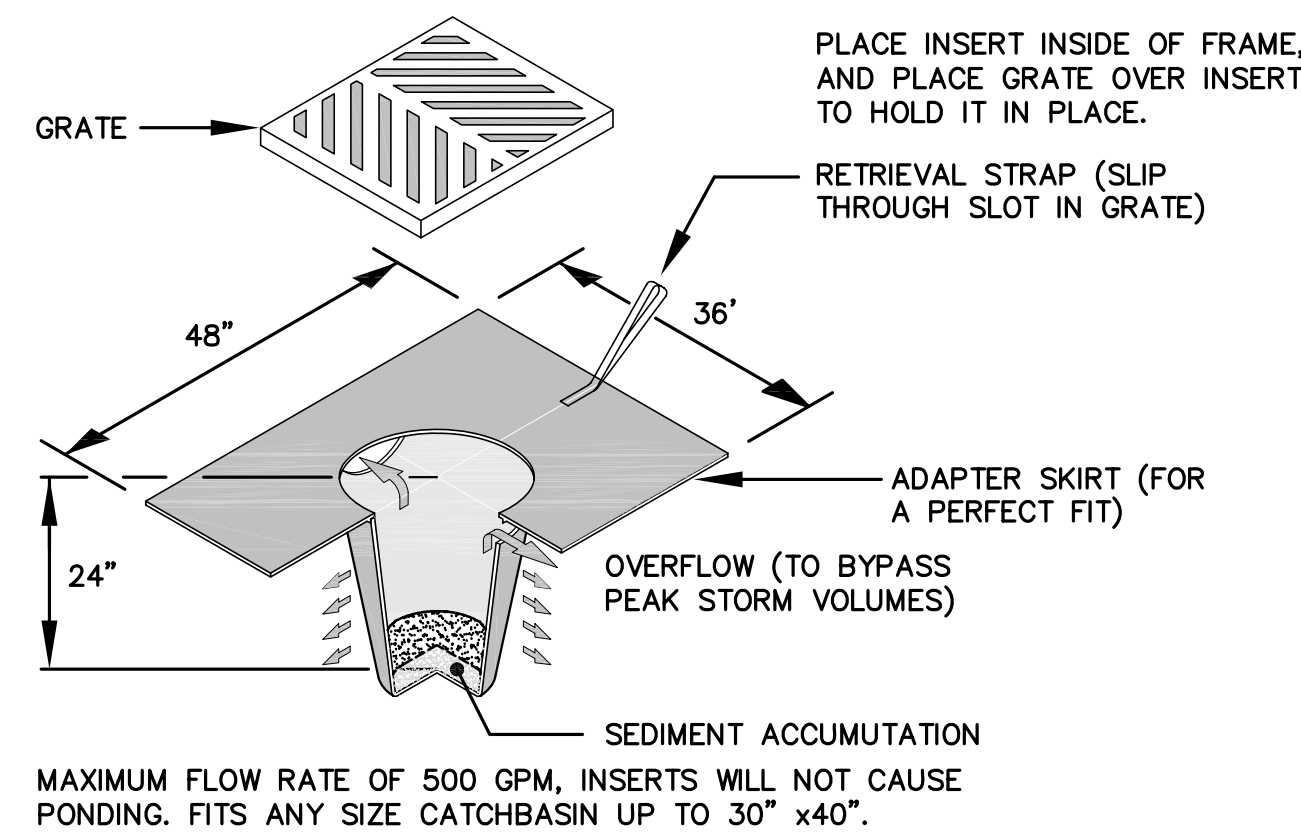


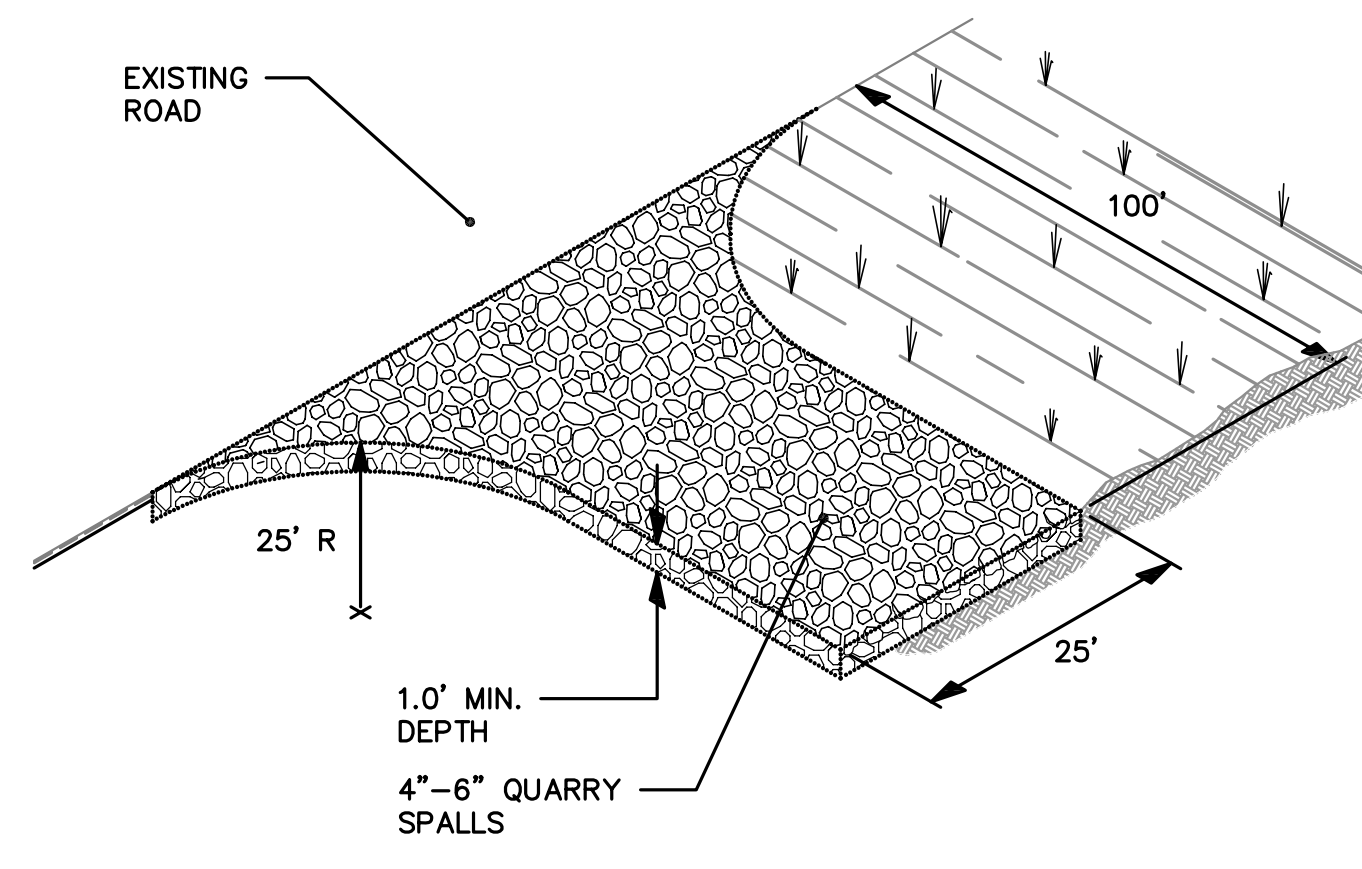
SEC. 20, T. 28 N., R. 4 E., W.M.



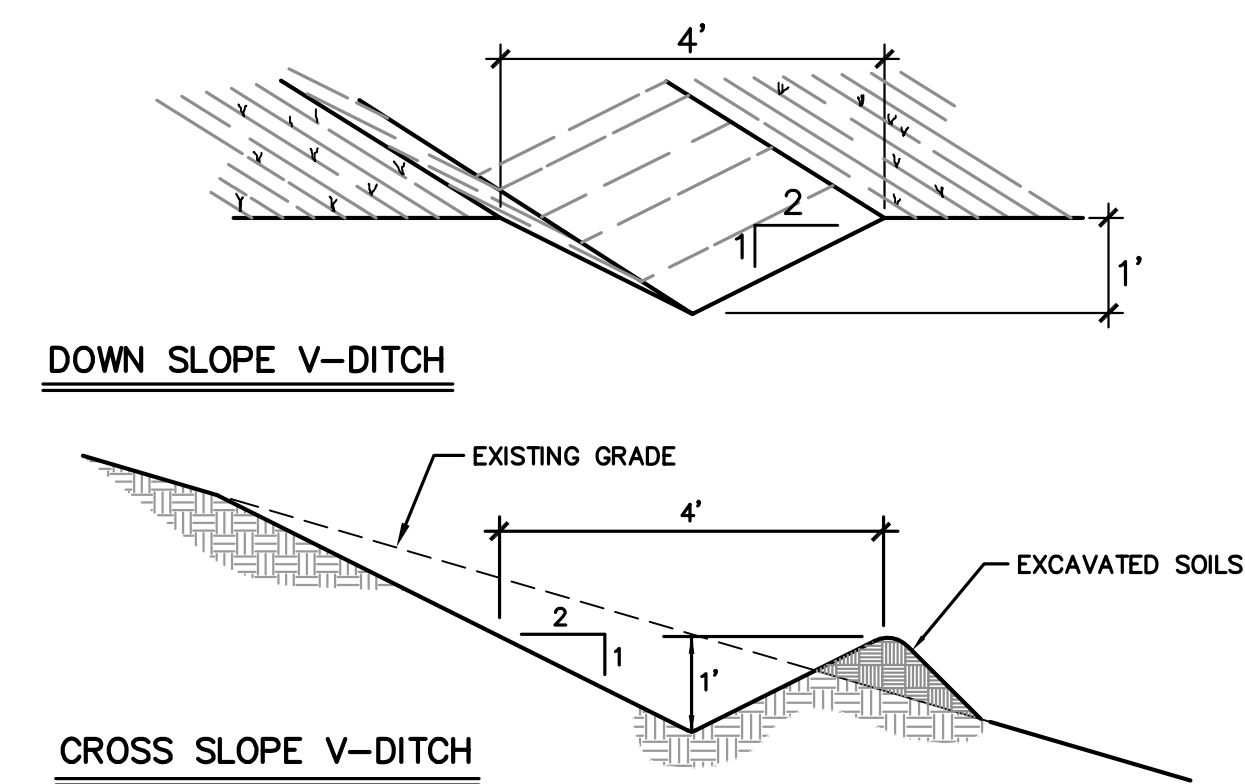
1 DOWNSPOUT TO TIGHTLINE



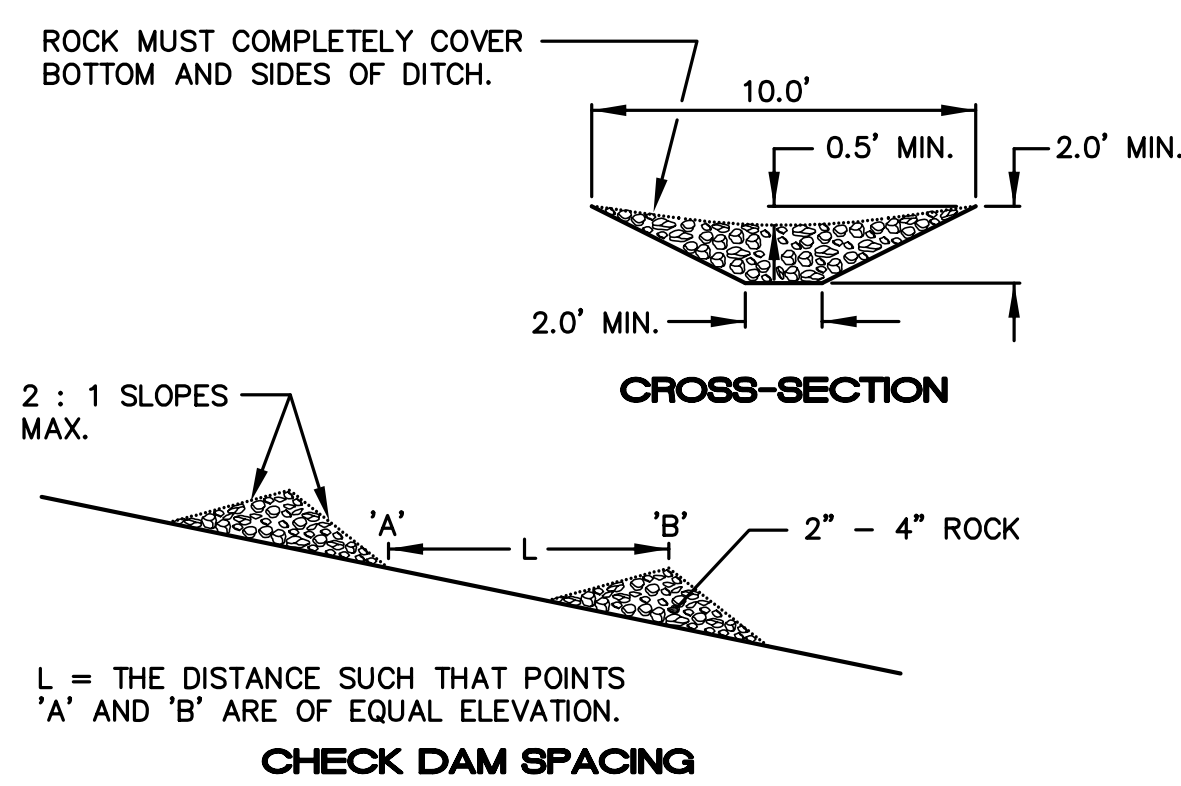
2 TEMPORARY CATCH BASIN INSERT



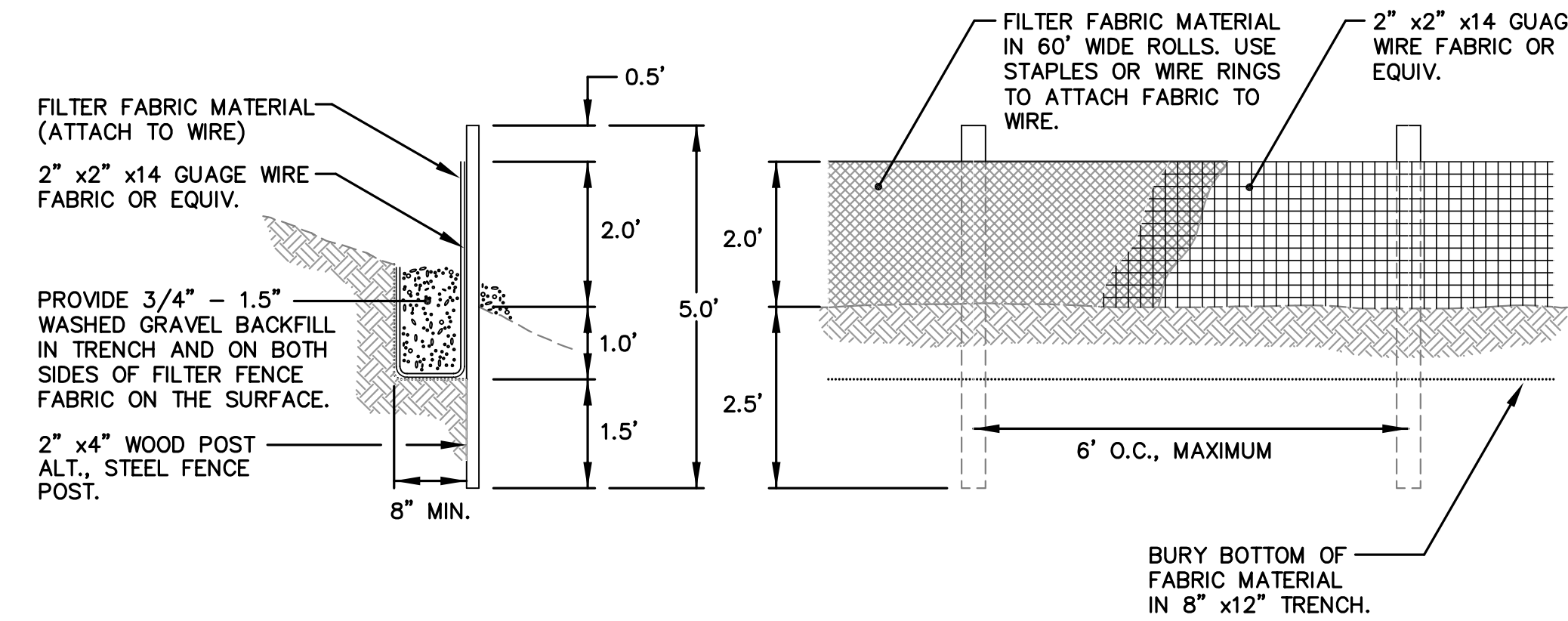
3 TEMP., ROCKED CONSTRUCTION ENTRANCE



4 INTERCEPTOR SWALE

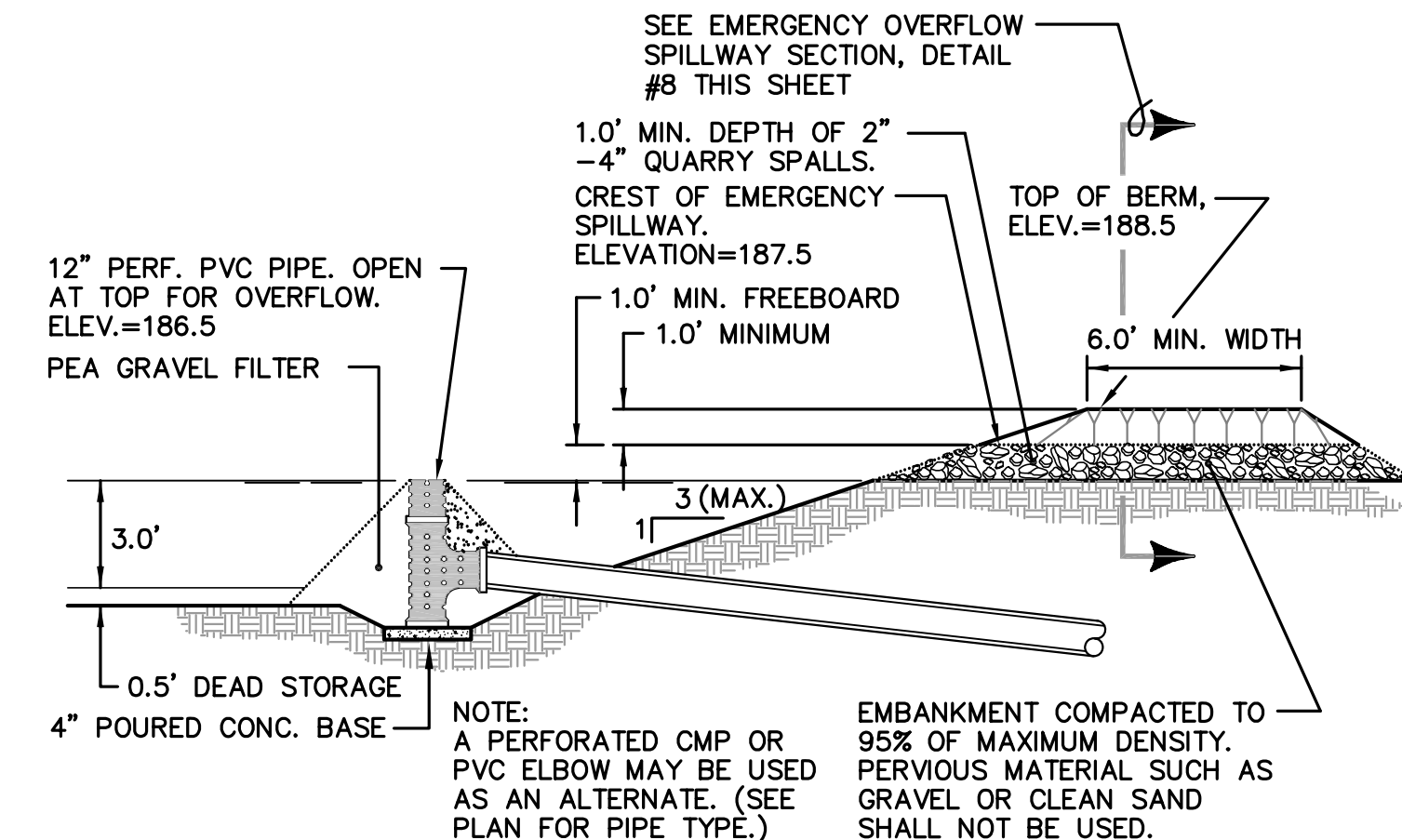


5 ROCK CHECK DAM

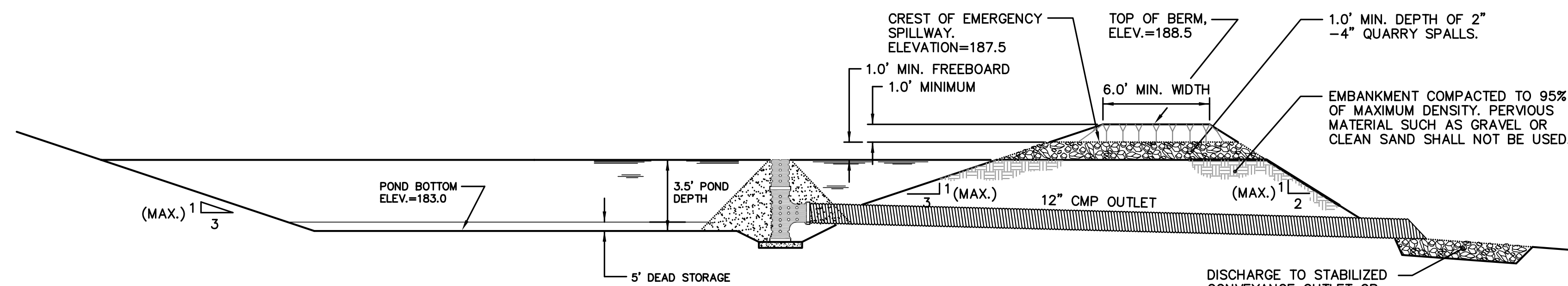


6 SILT FENCING

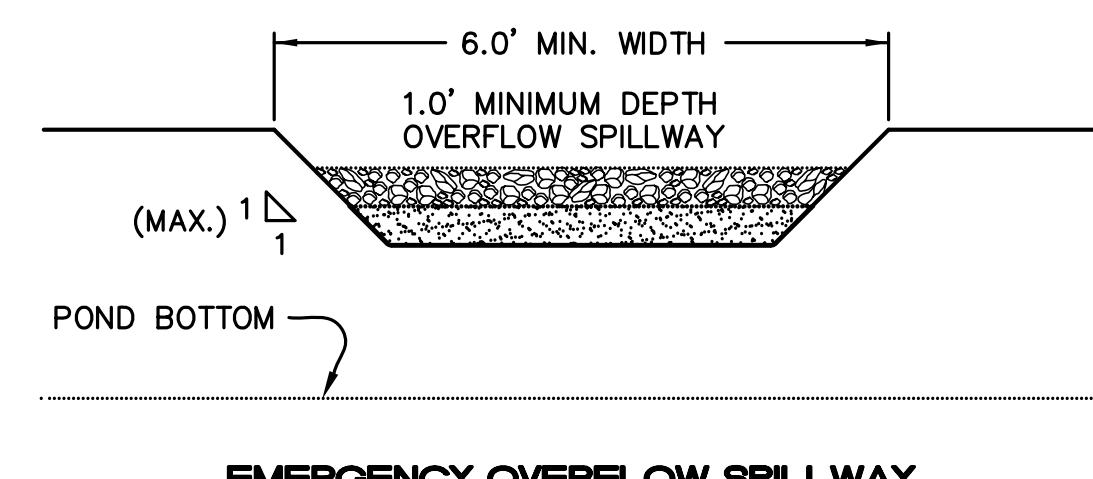
PURPOSE: TO RETAIN SEDIMENT FROM VERY SMALL DISTURBED AREAS BY CONSTRUCTION OF A TEMPORARY BARRIER MADE FROM RESIDUE MATERIALS AVAILABLE FROM CLEARING AND GRUBBING THE SITE. CONDITIONS WHERE PRACTICE APPLIES: BELOW DISTURBED AREAS SUBJECT TO SHEET AND RILL EROSION, WHERE ENOUGH RESIDUE MATERIAL IS AVAILABLE FOR CONSTRUCTION OF SUCH A BARRIER. NOTE: DOES NOT REPLACE THE NEED FOR A SEDIMENT TRAP OR POND. DESIGN CRITERIA/SPECIFICATIONS: MINIMUM HEIGHT= 3.0'. MAXIMUM HEIGHT= 5.0'. MINIMUM WIDTH= 5.0' AT IT'S BASE. MAXIMUM WIDTH= 15.0'. A FILTER FENCE ANCHORED OVER THE BRUSH BERM MAY BE REQUIRED BY BALD TO ENHANCE THE FILTRATION ABILITY OF THE BARRIER.



7 GRAVEL FILTER CONE OUTLET

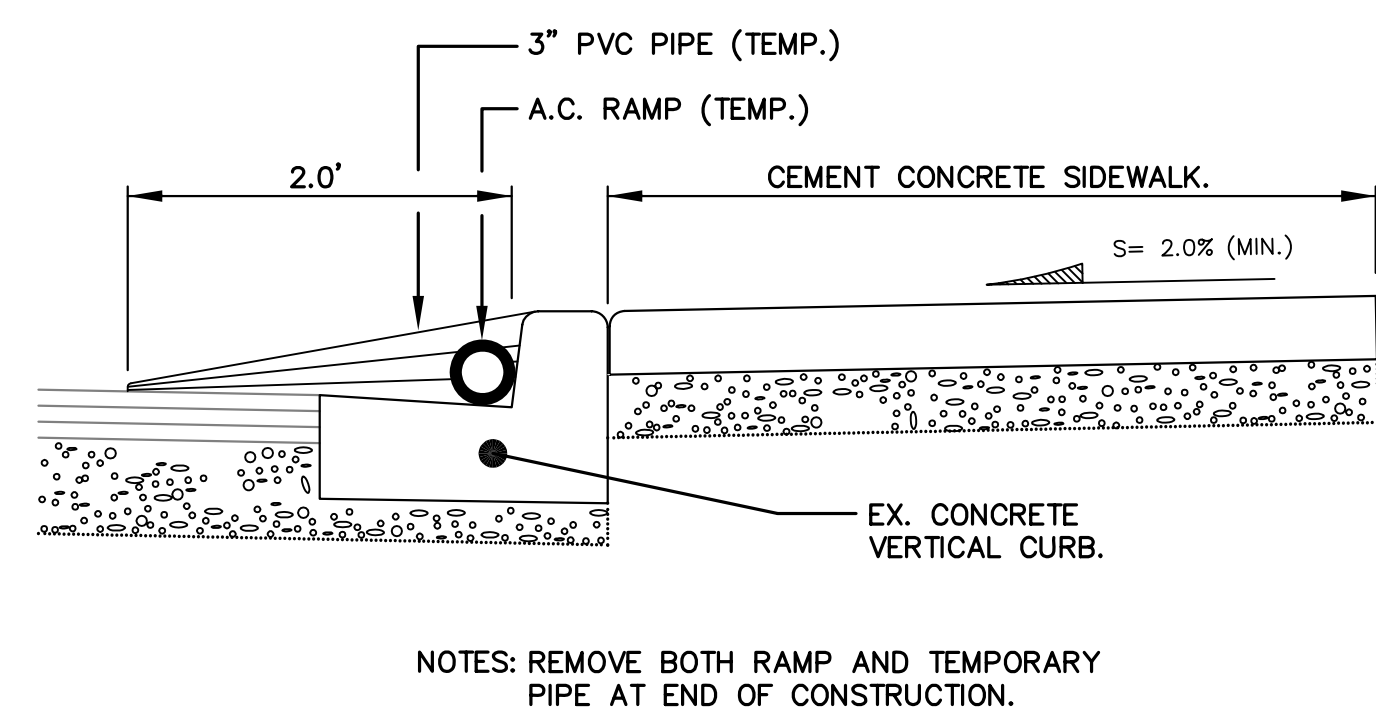


8 TEMPORARY EROSION SEDIMENTATION CONTROL POND

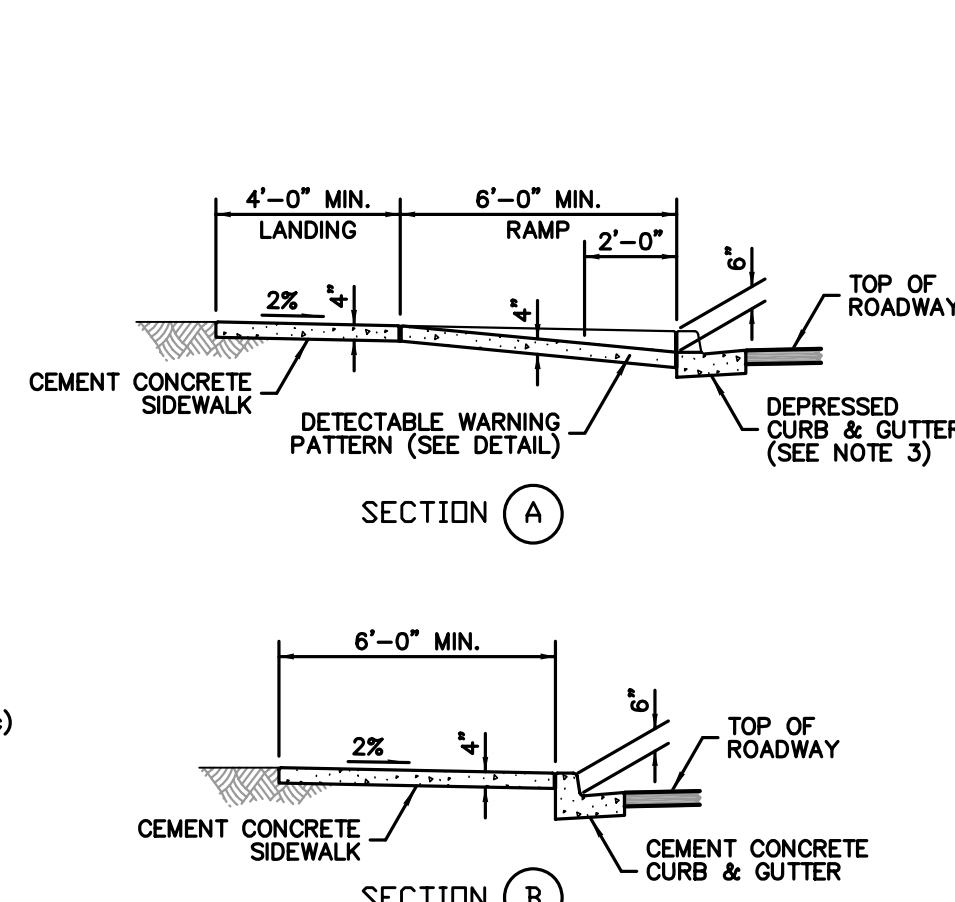
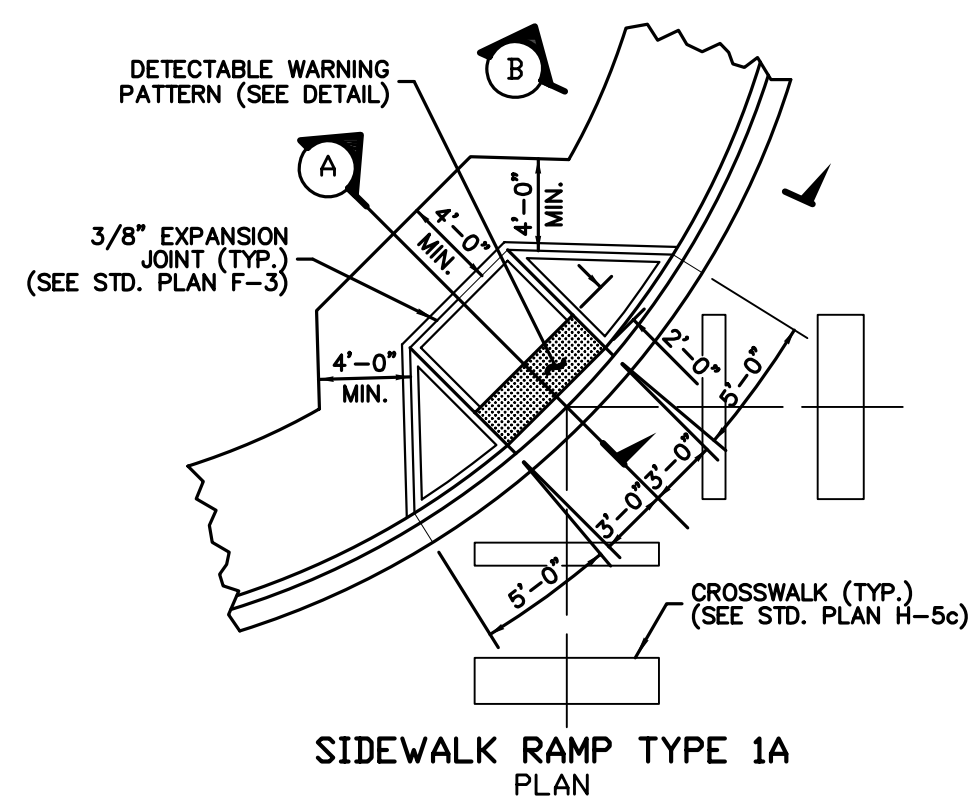


EMERGENCY OVERFLOW SPILLWAY

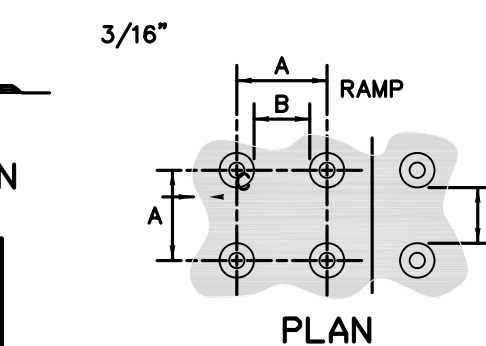
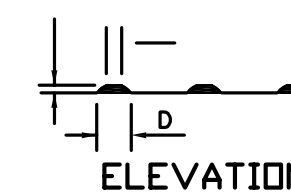
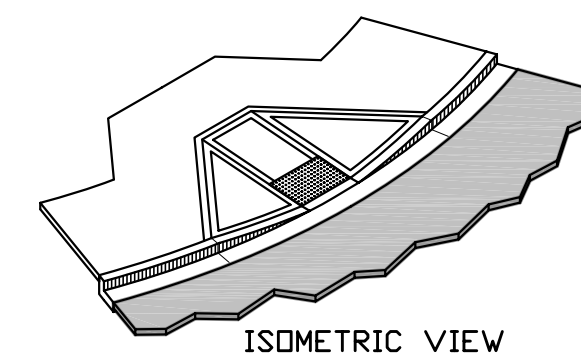
NOTES: 1. SEDIMENT SHALL BE REMOVED FROM THE POND WHEN IT REACHES 1.0' IN DEPTH. 2. ANY DAMAGE TO THE POND EMBANKMENTS OR SLOPES SHALL BE REPAIRED.



9 TEMP. A.C. RAMP AND FLOW THROUGH PIPE



10 SIDEWALK RAMP TYPE 1A (WSDOT STD. PLAN F-3a)



	MIN.	MAX.
A	1 5/8"	2 3/8"
B	5/8"	1 1/2"
C	7/16"	3/4"
D	7/8"	1 7/16"

TRUNCATED DOMES (SEE NOTE 2) DETECTABLE WARNING PATTERN DETAIL

NOTES: 1. Avoid placing drainage structures, junction boxes or other obstructions in front of ramp access areas. 2. Detectable warning patterns may be created by any method that will achieve the truncated dome dimensions and spacing shown. The detectable warning pattern area shall be yellow, in compliance with Std. Spec. 8-14.3(3). 3. Curb and gutter shown, see the Contract Plans for the curb design specified. See Std. Plan F-1 for curb details. 4. See Std. Plan F-3 for sidewalk joint placement and details. 5. Ramp slopes shall not be steeper than 12H:1V.



4180 LIND AVE. S.W.
RENTON, WA 98055
PHONE: (425) 251-8811
FAX: (425) 251-8880
WEB SITE: PACENG.COM

Pacific Engineering Design, LLC
Civil Engineering and Planning Consultants

WESTRIDGE (SECTOR 11 PHASE II)
MUKILTEO, WA.

FOR THE BURNSTHEADS
1215 120TH AVENUE NE SUITE 201
BELLUVE, WA 98055-2135
PHONE: (425) 454-1900 FAX: (425) 454-4543

PROJECT NO.: 03002
DRAWN BY: DJW
ISSUE DATE: 02-28-03
SHEET REV.: 07-23-03

DETAILS

03002D01.dwg
C09