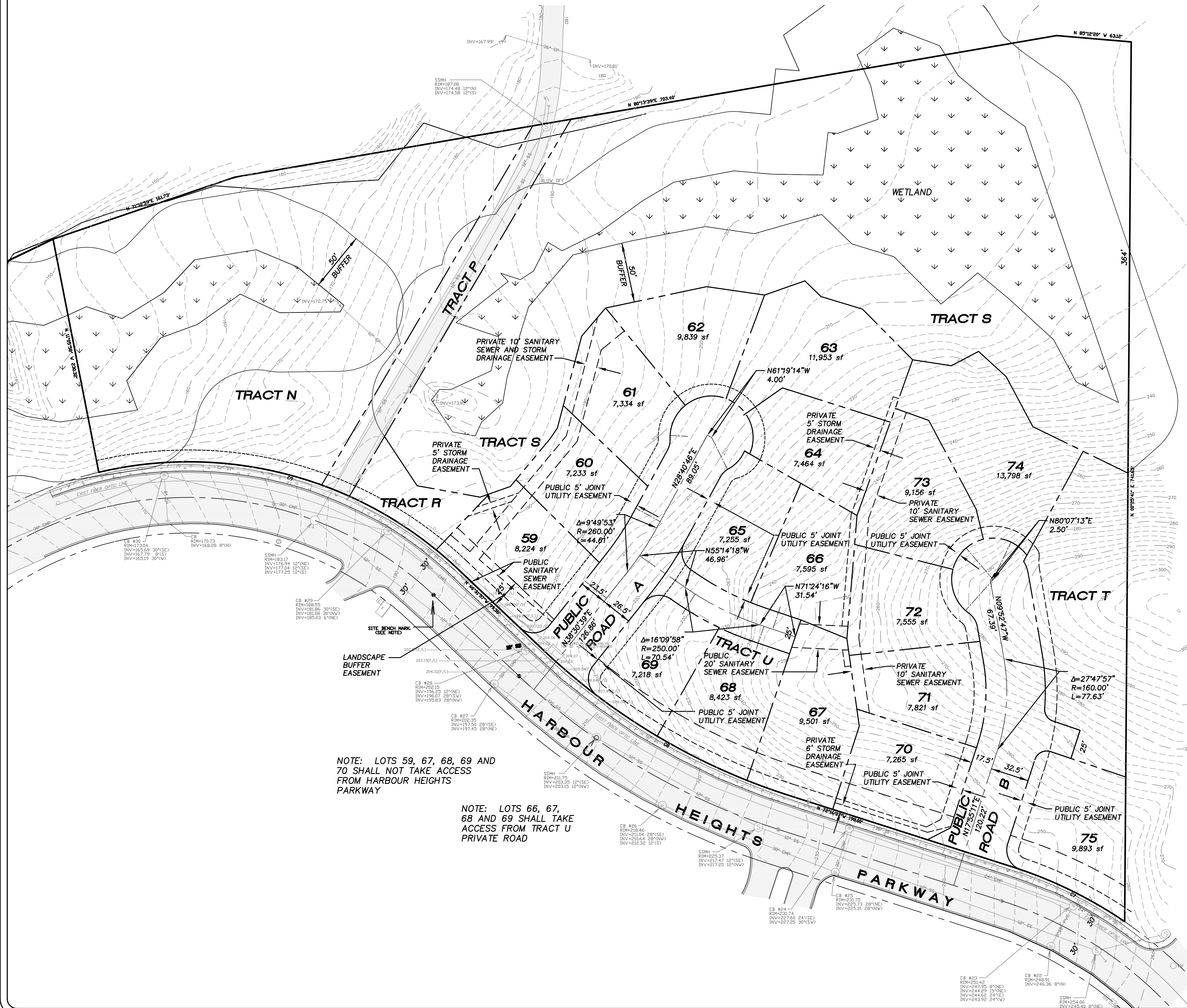
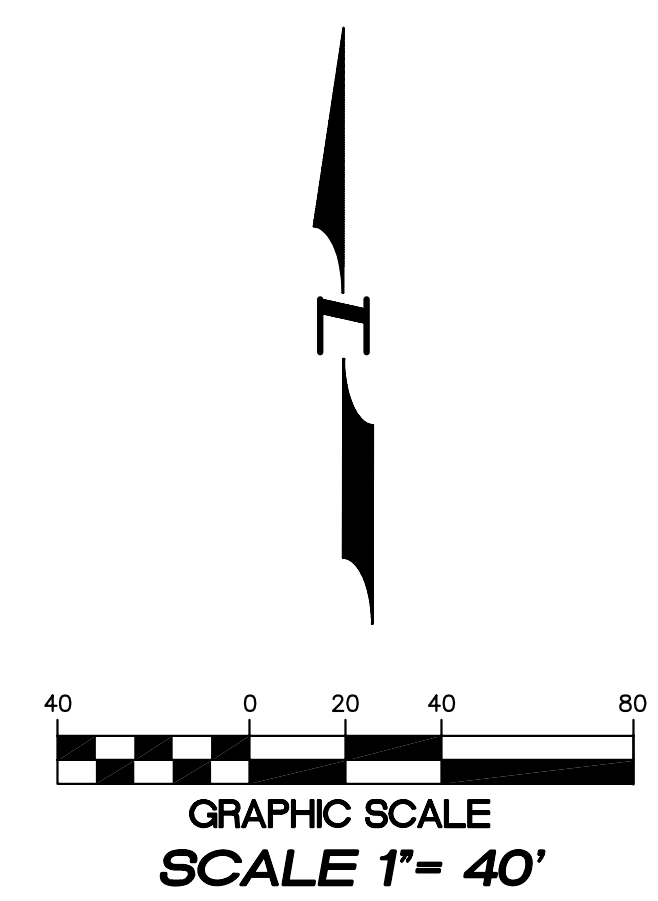


SEC. 20, T. 28 N., R. 4 E., W.M.



NOTE: LOTS 59, 67, 68, 69 AND 70 SHALL NOT TAKE ACCESS FROM HARBOUR HEIGHTS PARKWAY

NOTE: LOTS 66, 67, 68 AND 69 SHALL TAKE ACCESS FROM TRACT U PRIVATE ROAD



HORIZONTAL DATUM :
HARBOUR POINTE SECTOR 11 BUSINESS PARK AF# 8702115001

BASIS OF BEARINGS :
HARBOUR POINTE SECTOR 11 BUSINESS PARK AF# 8702115001

VERTICAL DATUM :
OLYMPUS TERRACE SEWER DISTRICT DATUM SITE BENCH MARK :
TOP OF P.C. MONUMENT IN CASE IN CENTER OF HARBOUR HEIGHTS PARKWAY.
ELEVATION = 193.47 FEET.
(REFERENCE HARBOUR POINTE SECTOR 11 BUSINESS PARK ROAD AND STORM DRAINAGE SYSTEM CONSTRUCTION PLAN BY NORTHWEST ENGINEERING COMPANY APPROVED 1/27/87.)



4180 LIND AVE. S.W.
RENTON, WA 98055
PHONE: (425) 251-8811
FAX: (425) 251-8880
WEB SITE: PACENG.COM

Pacific Engineering Design, LLC
Civil Engineering and Planning Consultants

WESTRIDGE (SECTOR 11 PHASE II)
MUKILTEO, WA.

FOR:
THE BURNSTEADS
1215 120TH AVENUE NE, SUITE 201
MUKILTEO, WA 98147
PHONE: (425) 454-1800 FAX: (425) 454-4543

PROJECT NO.: **03002**
DRAWN BY: **JGC**
ISSUE DATE: **02-28-03**
SHEET REV.: **07-23-03**

HORIZONTAL CONTROL PLAN

03002HC01.DWG
C03