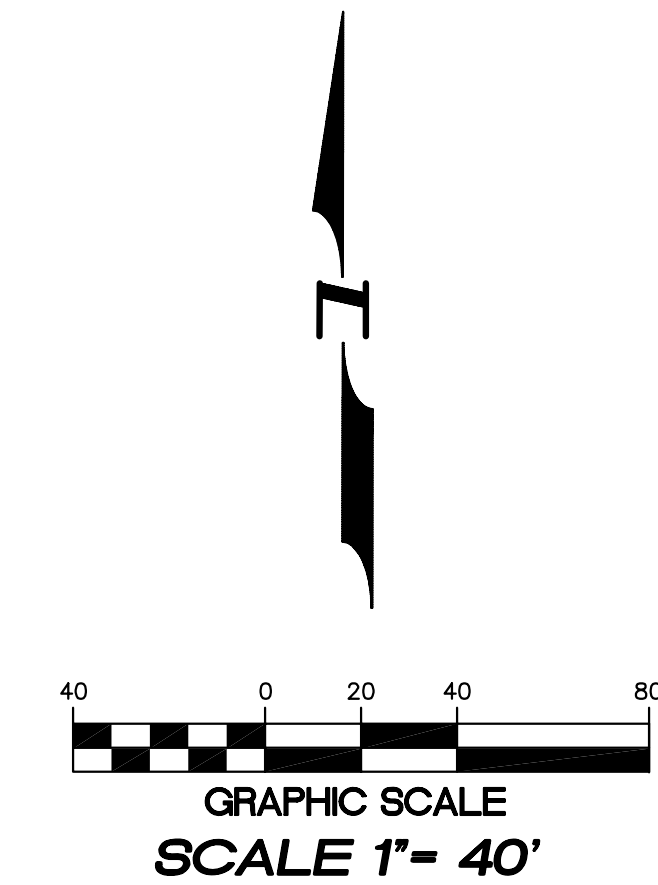
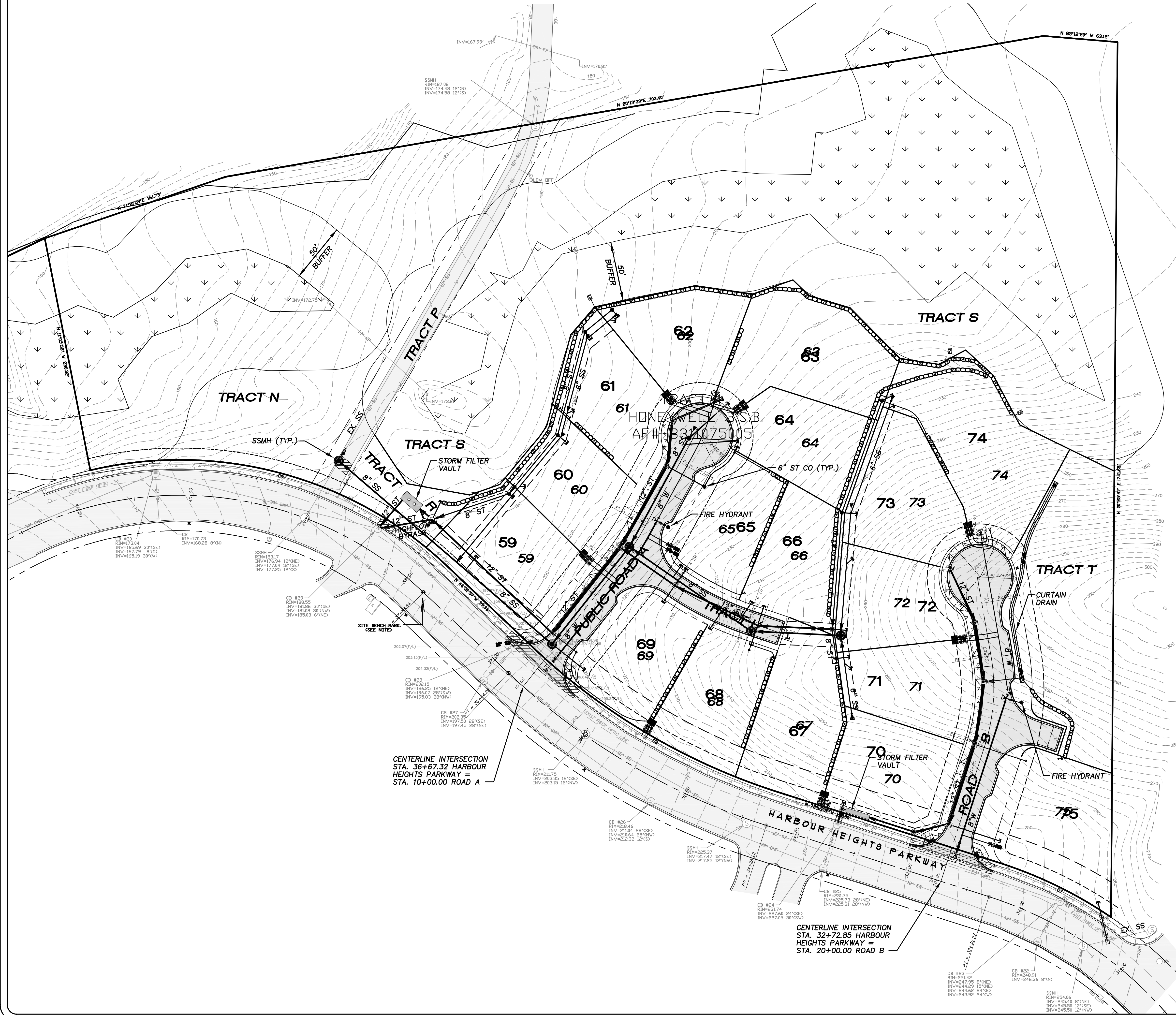


SEC. 20, T. 28 N., R. 4 E., W.M.



HORIZONTAL DATUM :
 HARBOUR POINTE SECTOR 11 BUSINESS PARK AF# 8702115001

BASIS OF BEARINGS :
 HARBOUR POINTE SECTOR 11 BUSINESS PARK AF# 8702115001

VERTICAL DATUM :
 OLYMPUS TERRACE SEWER DISTRICT DATUM SITE BENCH MARK :
 TOP OF P.C. MONUMENT IN CASE IN CENTER OF HARBOUR
 HEIGHTS PARKWAY.
 ELEVATION = 193.47 FEET.

(REFERENCE HARBOUR POINTE SECTOR 11 BUSINESS PARK
 ROAD AND STORM DRAINAGE SYSTEM CONSTRUCTION PLAN
 BY NORTHWEST ENGINEERING COMPANY APPROVED 1/27/87.)

LEGEND

- ▶ SANITARY SEWER CLEANOUT PER DTL. 1, SHT. C15
- SANITARY SEWER MANHOLE PER DTL. 3 AND 4, SHT. C15
- ┆ CAP. SANITARY SEWER SIDE SERVICE W/MARKER POST PER DTL. 5, SHT. C15
- ⊕ FIRE HYDRANT ASSEMBLY PER DTL. W-D3, SHT. C18
- ┆ CAP. WATER MAIN W/2" AIR VAC. ASSEMBLY PER DTL. W-D6, SHT. C18
- ⊕ WATER METER PER DTL. W-D8, W-D9 AND W-D10, SHT. C18
- ┆ 22 1/2' ELBOW PER DTL. W-D11, SHT. C18
- ┆ TEE W/GATE VALVE PER DTL. W-D11, SHT. C18
- ▬ CB TYPE I PER DTL. 1 AND 4, SHT. C11
- ▬ CB TYPE I W/SOLID LOCKING LID PER DTL. 1 AND 5, SHT. C11
- ⊕ CB TYPE II PER DTL. 3 AND 4, SHT. C11
- ⊕ CB TYPE II W/SOLID LOCKING LID PER DTL. 3 AND, SHT. C11
- STORM DRAIN CLEANOUT (AS NOTED) PER DTL. 9, SHT. C10
- ┆ CAP. STORM DRAIN SIDE SERVICE W/MARKER POST PER DTL. 7, SHT. C10



4180 LIND AVE. S.W.
 RENTON, WA 98055
 PHONE: (425) 251-8811
 FAX: (425) 251-8880
 WEB SITE: PACENG.COM

Pacific Engineering Design, LLC
 Civil Engineering and Planning Consultants

WESTRIDGE (SECTOR 11 PHASE II)
 MUKILTEO, WA.
 FOR: THE BURNSTEADS
 1215 120TH AVENUE NE, SUITE 201
 KILLBUCK, WA 98002-2554
 PHONE: (425) 454-1800 FAX: (425) 454-4543

PROJECT NO.: **03002**
 DRAWN BY: **JGC**
 ISSUE DATE: **02-28-03**
 SHEET REV.: **07-23-03**

COMPOSITE UTILITY PLAN

03002CU01.DWG
C02