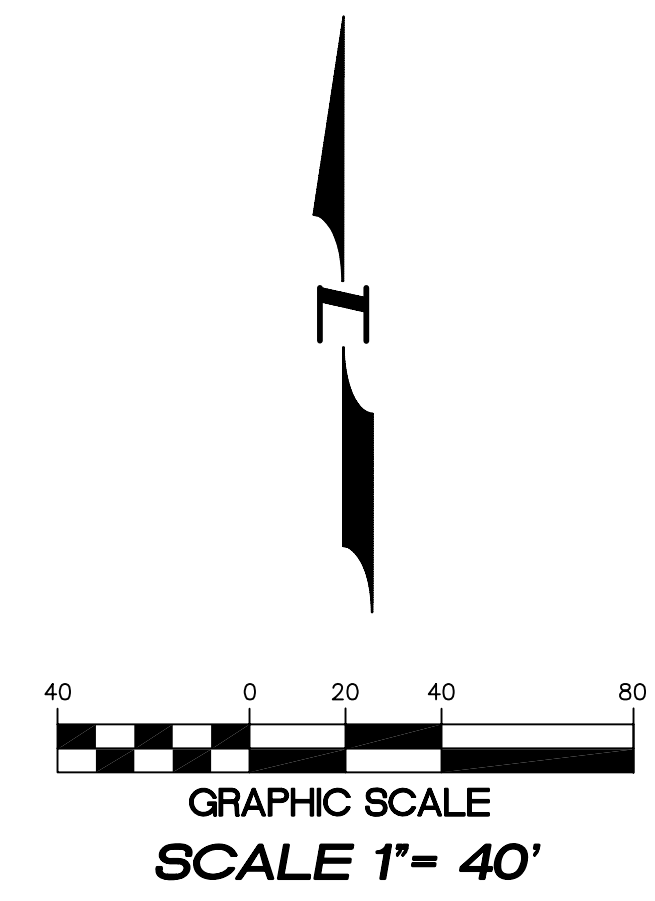
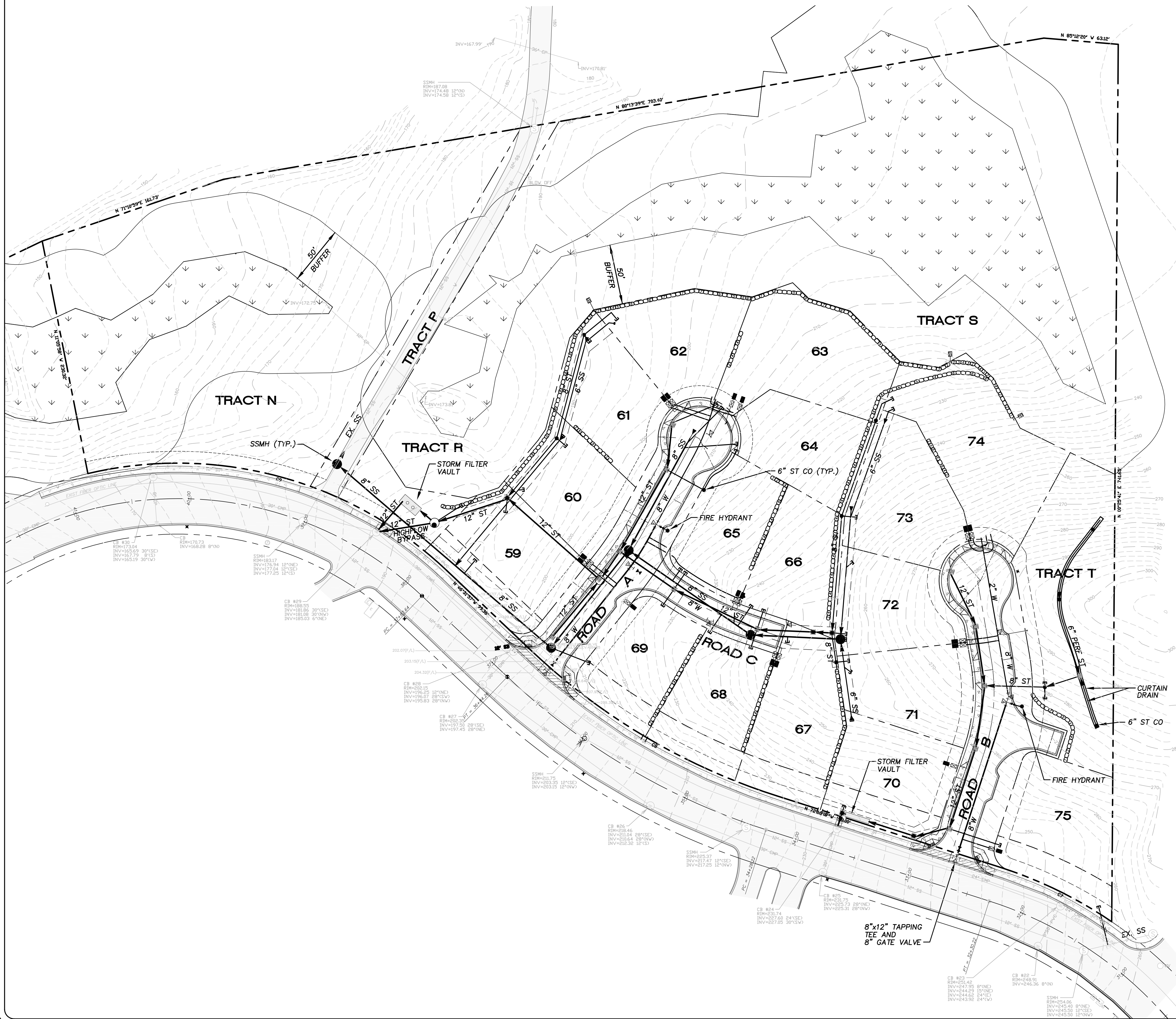


SEC. 20, T. 28 N., R. 4 E., W.M.



**HORIZONTAL DATUM :**  
HARBOUR POINTE SECTOR 11 BUSINESS PARK AF# 8702115001

**BASIS OF BEARINGS :**  
HARBOUR POINTE SECTOR 11 BUSINESS PARK AF# 8702115001

**VERTICAL DATUM :**  
OLYMPUS TERRACE SEWER DISTRICT DATUM SITE BENCH MARK :  
TOP OF P.C. MONUMENT IN CASE IN CENTER OF HARBOUR  
HEIGHTS PARKWAY.  
ELEVATION = 193.47 FEET.

(REFERENCE HARBOUR POINTE SECTOR 11 BUSINESS PARK  
ROAD AND STORM DRAINAGE SYSTEM CONSTRUCTION PLAN  
BY NORTHWEST ENGINEERING COMPANY APPROVED 1/27/87.)

**LEGEND**

●	SANITARY SEWER MANHOLE
▼	SANITARY SEWER CLEANOUT
⊥	CAP, SANITARY SEWER SIDE SERVICE
⊞	WATER METER
⊞	22 1/2" ELBOW
⊞	TEE W/GATE VALVE
⊞	CAP, WATER MAIN W/2" AIR VAC. ASSEMBLY
⊞	FIRE HYDRANT ASSEMBLY
■	CB TYPE I
■	CB TYPE I W/SOLID LOCKING LID
●	CB TYPE II
●	CB TYPE II W/SOLID LOCKING LID
●	STORM DRAIN CLEANOUT (AS NOTED)
⊥	CAP, STORM DRAIN SIDE SERVICE



4180 LIND AVE. S.W.  
RENTON, WA 98055  
PHONE: (425) 251-8811  
FAX: (425) 251-8880  
WEB SITE: PACENG.COM

**Pacific Engineering Design, LLC**  
Civil Engineering and Planning Consultants

**HARBOUR POINTE SECTOR 11 PHASE II**  
MUKILTEO, WA.

FOR:  
THE BURNSTEADS  
1215 120TH AVENUE NE, SUITE 201  
BELLINGHAM, WA 98225  
PHONE: (425) 454-1800 FAX: (425) 454-4543

PROJECT NO.: **03002**  
DRAWN BY: **JGC/GLD**  
ISSUE DATE: **02-28-03**  
SHEET REV.: **04-25-03**

**COMPOSITE UTILITY PLAN**

03002CU01.DWG  
**P05**