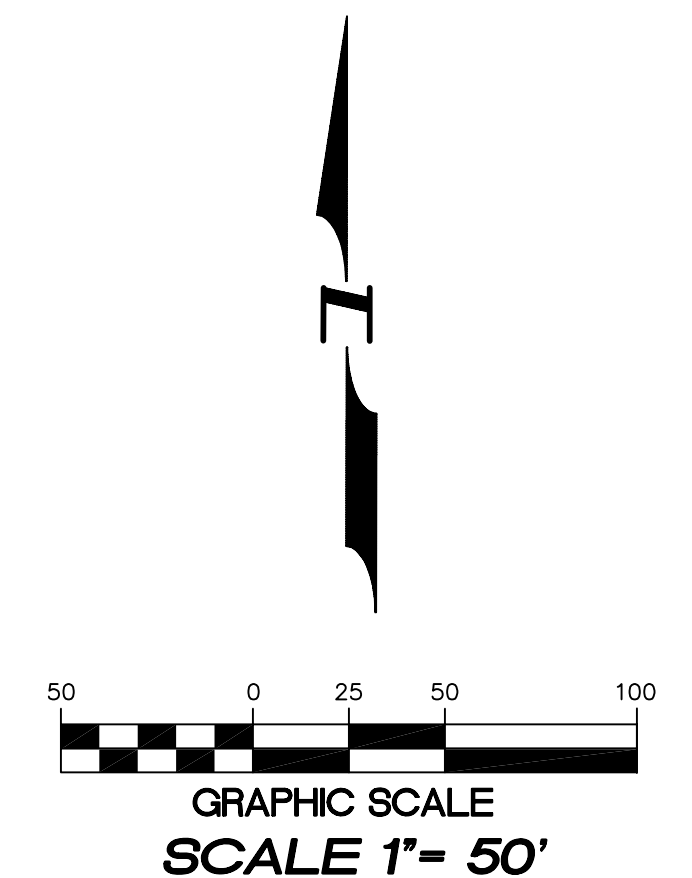
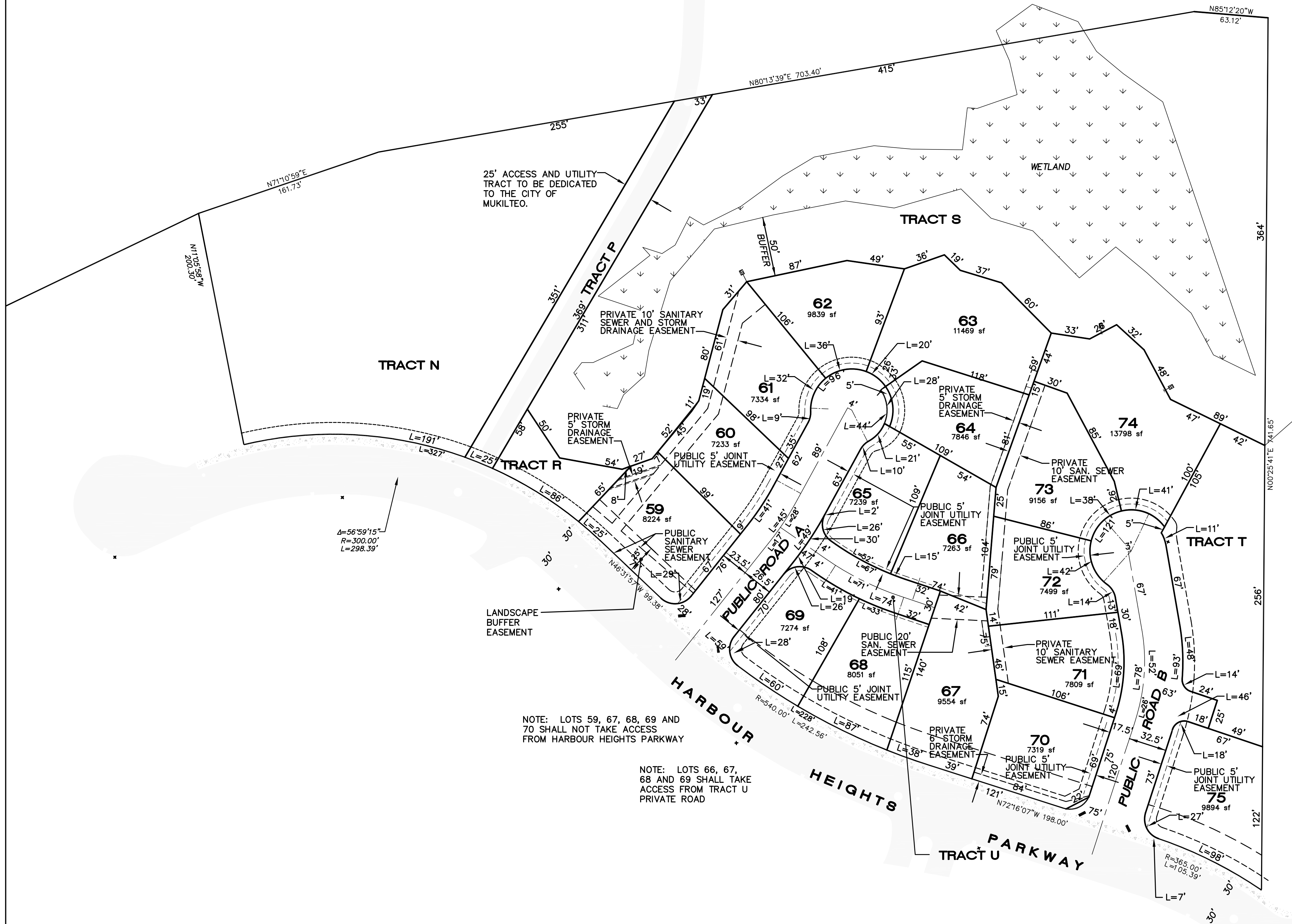


SEC. 20, T. 28 N., R. 4 E., W.M.



HORIZONTAL DATUM :
HARBOUR POINTE SECTOR 11 BUSINESS PARK AF# 8702115001

BASIS OF BEARINGS :
HARBOUR POINTE SECTOR 11 BUSINESS PARK AF# 8702115001

VERTICAL DATUM :
OLYMPUS TERRACE SEWER DISTRICT DATUM SITE BENCH MARK :
TOP OF P.C. MONUMENT IN CASE IN CENTER OF HARBOUR
HEIGHTS PARKWAY.
ELEVATION = 193.47 FEET.
(REFERENCE HARBOUR POINTE SECTOR 11 BUSINESS PARK
ROAD AND STORM DRAINAGE SYSTEM CONSTRUCTION PLAN
BY NORTHWEST ENGINEERING COMPANY APPROVED 1/27/87.)

TRACT SUMMARY			
	AREA (S.F.)	USE	COMMENTS
TRACT N	72516	N.G.P.A.	CRITICAL AREA
TRACT P	8895	ACCESS/UTILITY	DEDICATE TO CITY
TRACT R	4231	STORMWATER	--
TRACT S	133447	N.G.P.A.	CRITICAL AREA
TRACT T	17233	OPEN SPACE	OWNER MAINTAINED
TRACT U	3790	PRIVATE ROAD	OWNER MAINTAINED



4180 LIND AVE. S.W.
RENTON, WA 98055
PHONE: (425) 251-8811
FAX: (425) 251-8880
WEB SITE: PACENG.COM

Pacific Engineering Design, LLC
Civil Engineering and Planning Consultants

WESTRIDGE SECTOR 11
MUKILTEO, WA.

FOR:
THE BURNSTEADS
1215 120TH AVENUE NE, SUITE 201
BELLINGHAM, WA 98225
PHONE: (425) 454-1800 FAX: (425) 454-4543

PROJECT NO.: **03002**
DRAWN BY: **GLD**
ISSUE DATE: **02-28-03**
SHEET REV.: **06-06-03**

PRELIMINARY PLAT MAP

03002HC01.DWG
P02