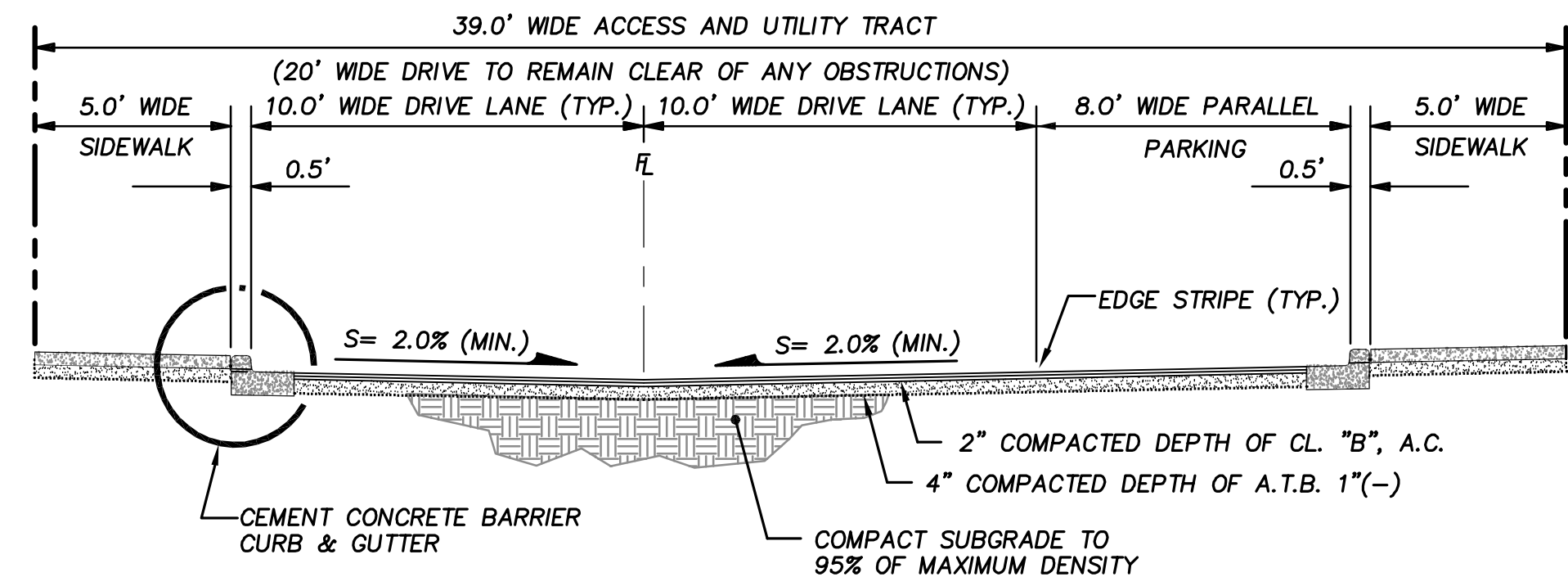
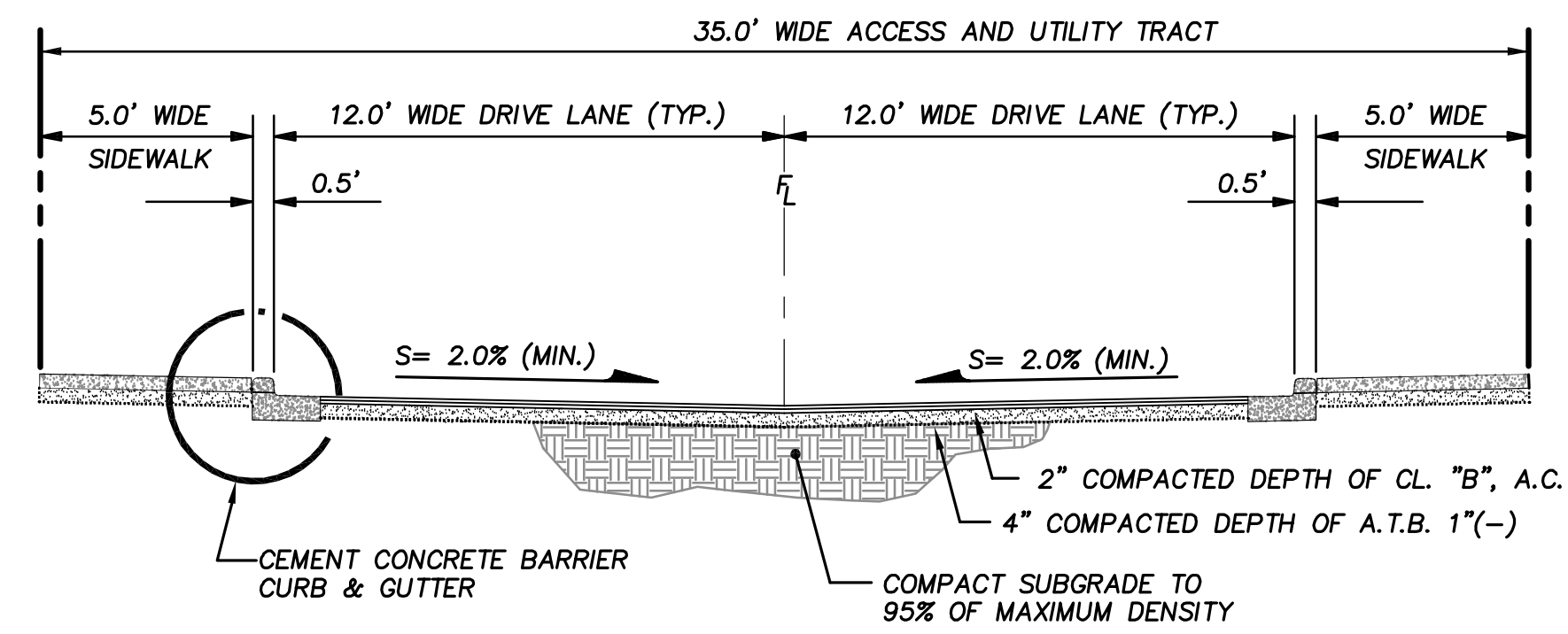


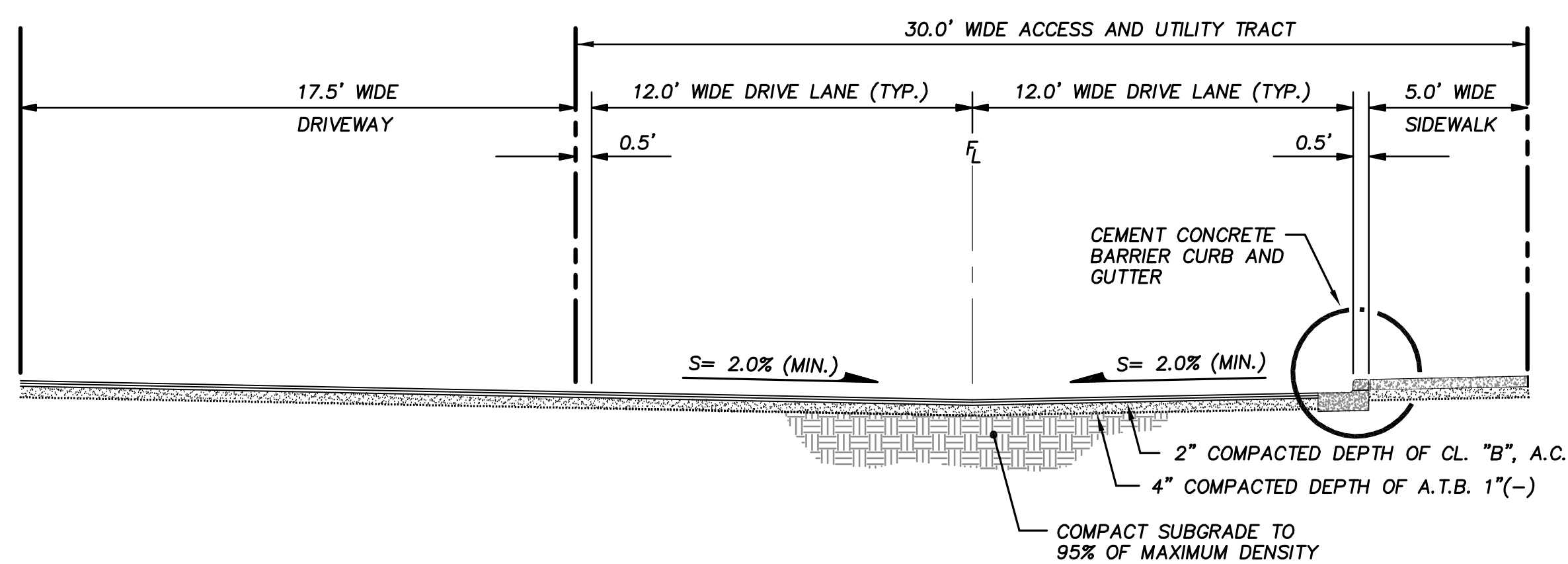
NE1/4, SECTION 28, T.28 N., R.4 E., W.M.



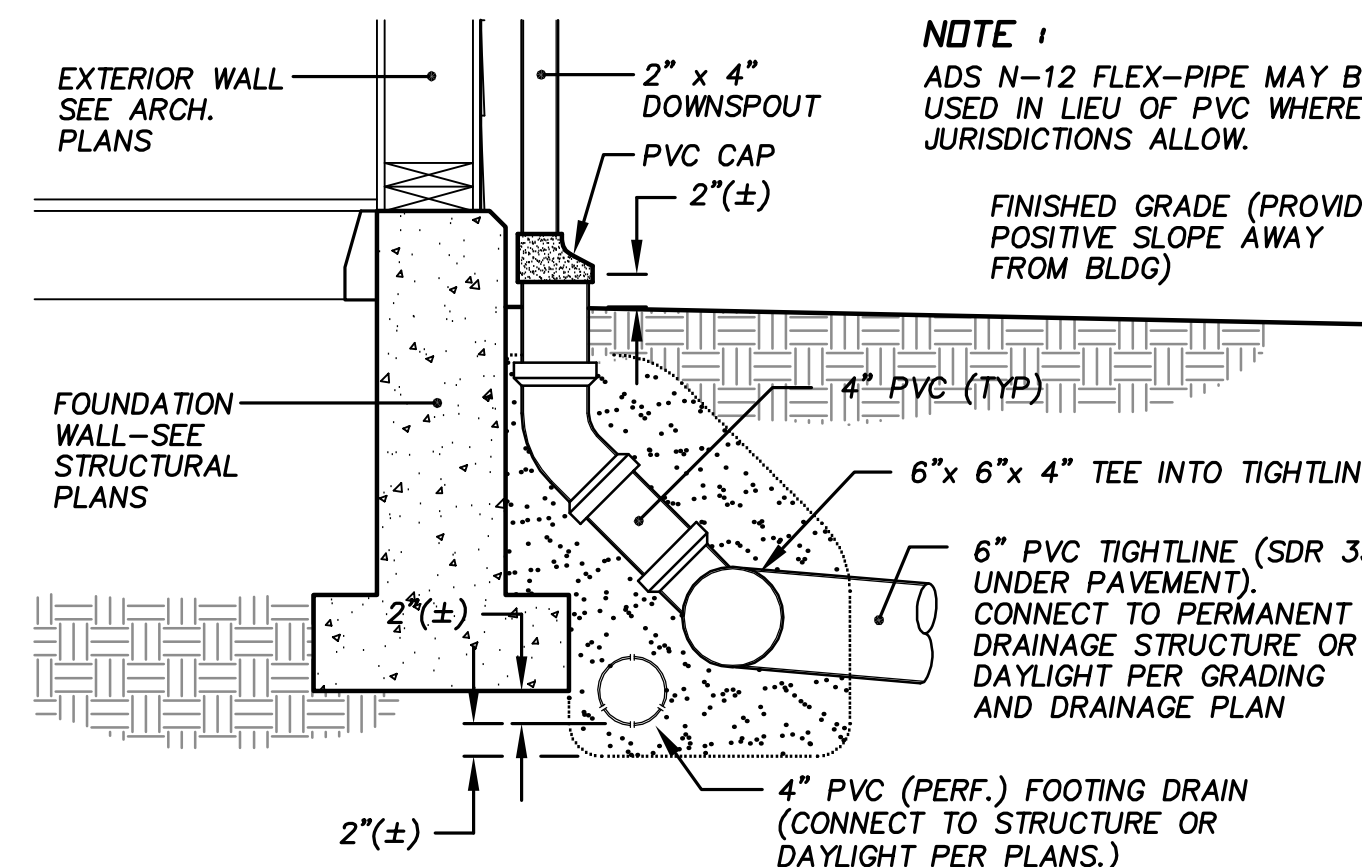
ROAD CROSS-SECTION 'A'



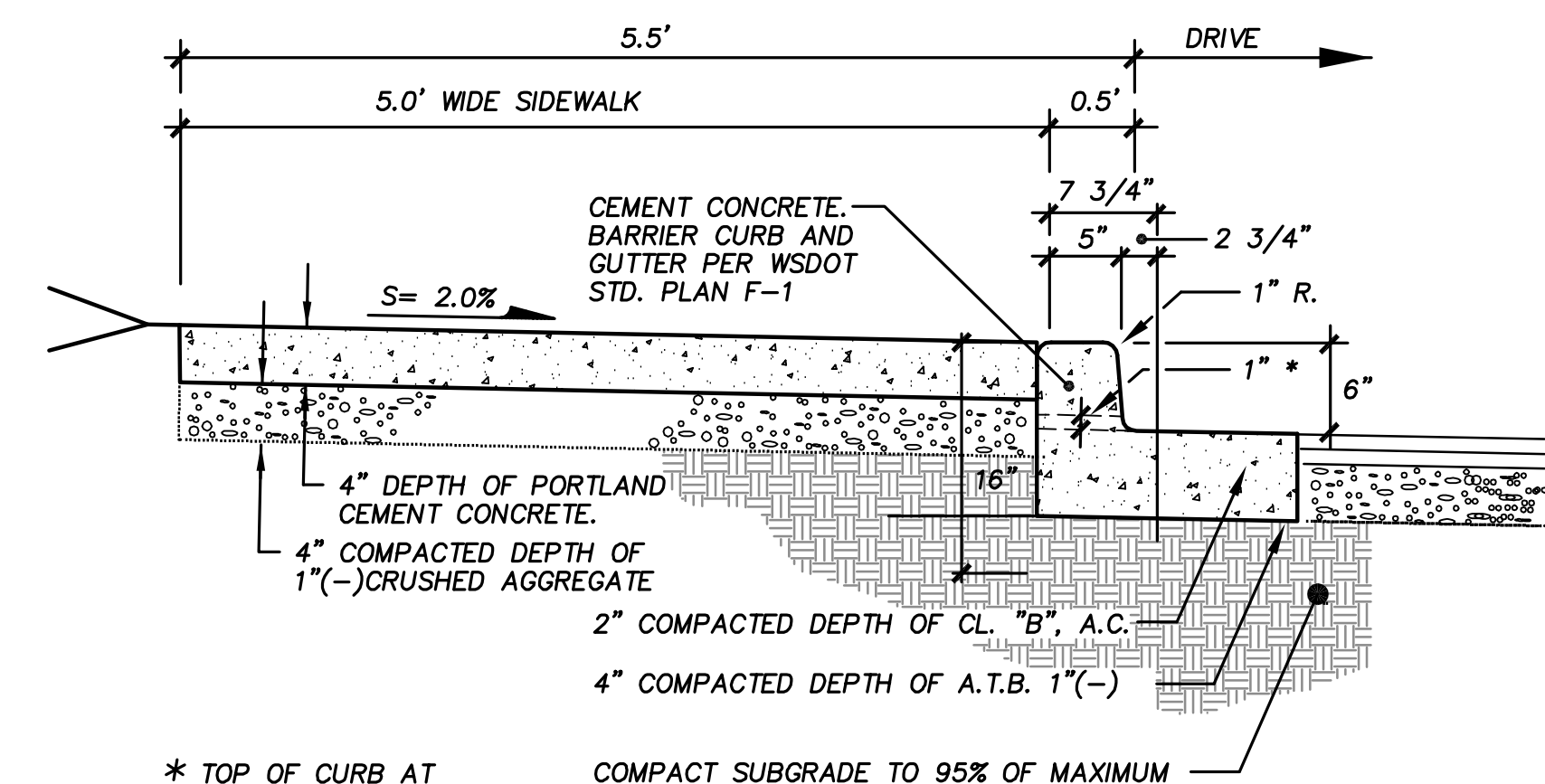
ROAD CROSS-SECTION 'B'



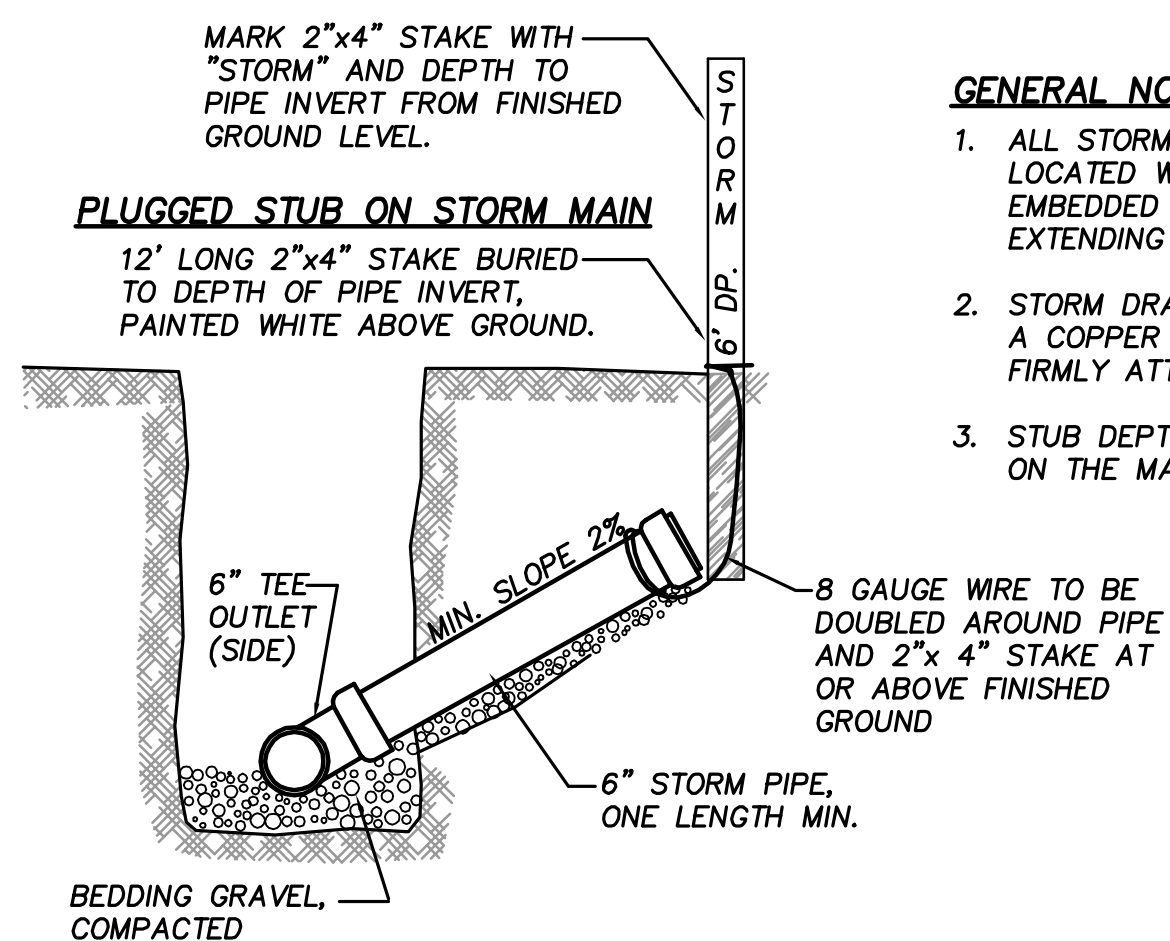
ROAD CROSS-SECTION 'C'



DOWNSPOUT TO TIGHTLINE



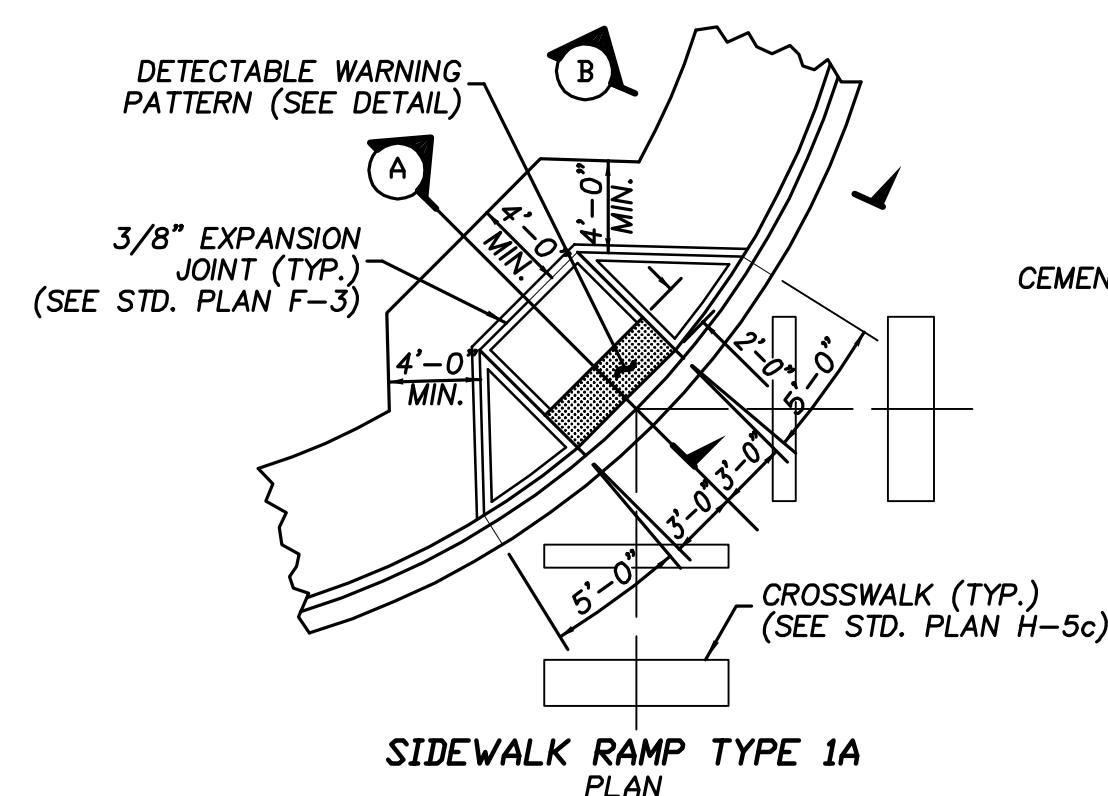
UPRIGHT CONC. CURBING



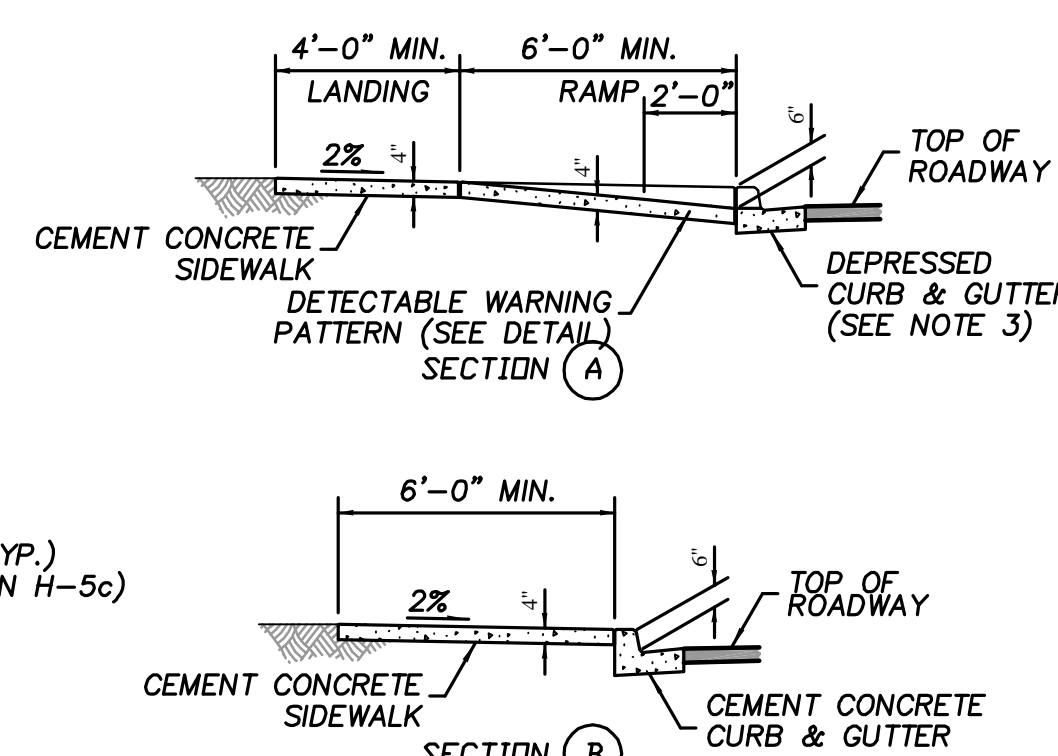
LOCATOR STAKE

GENERAL NOTES:

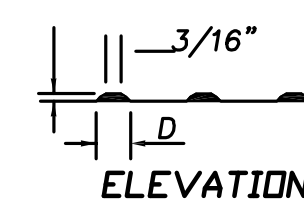
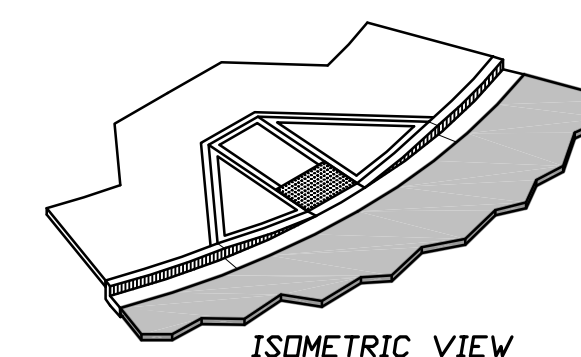
1. ALL STORM DRAIN STUBS TO BE CAPPED AND LOCATED W/8' L 2"x4" MARKER BOARD, EMBEDDED TO THE STUB CAP AND EXTENDING AT LEAST 3 FEET ABOVE GRADE.
2. STORM DRAIN STUBS SHALL BE MARKED "STORM" A COPPER 12 GA. LOCATE WIRE SHALL BE FIRMLY ATTACHED TO THE STUB MARKER.
3. STUB DEPTH SHALL BE CLEARLY INDICATED ON THE MARKER



SIDEWALK RAMP TYPE 1A PLAN



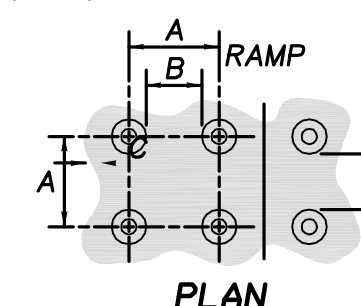
SIDEWALK RAMP TYPE 1A (WSDOT STD PLAN F-3a)



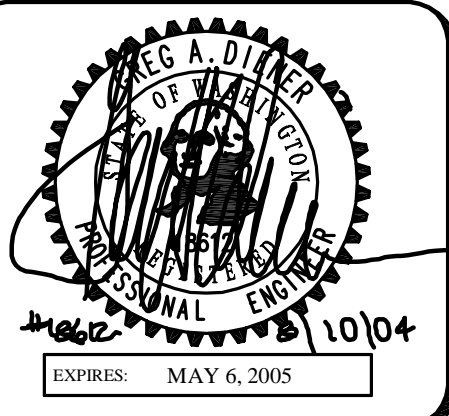
	MIN.	MAX.
A	1 5/8"	2 3/8"
B	5/8"	1 1/2"
C	7/16"	3/4"
D	7/8"	1 7/16"

NOTES

1. Avoid placing drainage structures, junction boxes or other obstructions in front of ramp access areas.
2. Detectable warning patterns may be created by any method that will achieve the truncated dome dimensions and spacing shown. The detectable warning pattern area shall be yellow, in compliance with Std. Spec. 8-14.3(3)
3. Curb and gutter shown, see the Contract Plans for the curb design specified. See Std. Plan F-1 for curb details.
4. See Std. Plan F-3 for sidewalk joint placement and details.
5. Ramp slopes shall not be steeper than 12H:1V.



TRUNCATED DOMES (SEE NOTE 2) DETECTABLE WARNING PATTERN DETAIL



4180 LIND AVE. S.W.
 RENTON, WA 98055
 PHONE: (425) 251-8811
 FAX: (425) 251-8880
 WEB SITE: PACENG.COM

Pacific Engineering Design, LLC
 Civil Engineering and Planning Consultants

VILLAGE CENTER TOWNHOMES
 MUKILTEO, WA.
 FOR: CHINOOK PACIFIC CORPORATION
 12189 VILLAGE CENTER PLACE, SUITE 203
 MUKILTEO, WA 98275
 PHONE: (425) 348-0807, FAX: (425) 348-4977

PROJECT NO.: **04007**
 DRAWN BY: **JGC**
 ISSUE DATE: **06-16-04**
 SHEET REV.: **08-10-04**

DETAILS

04007DT102-C11.DWG
C11