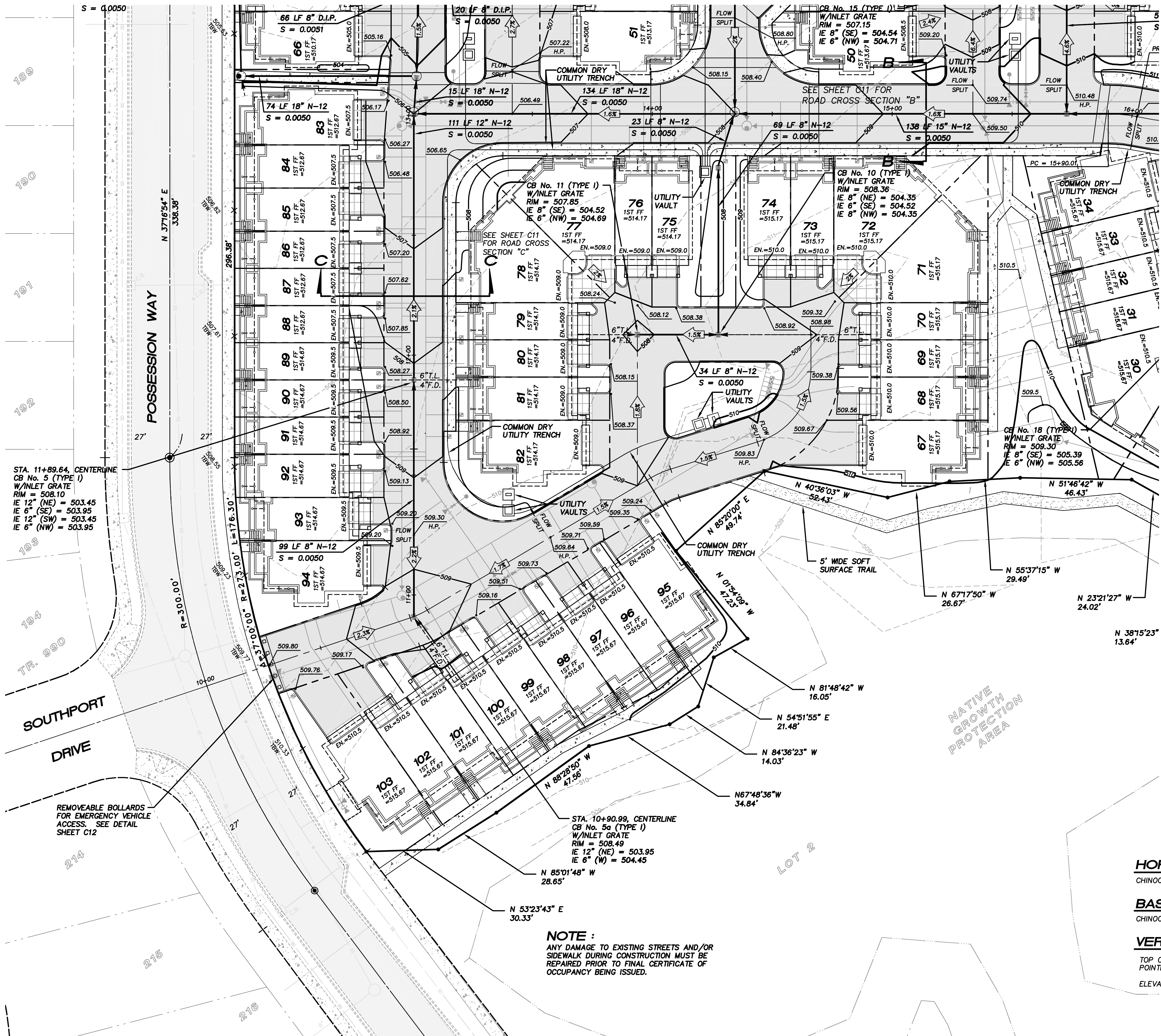
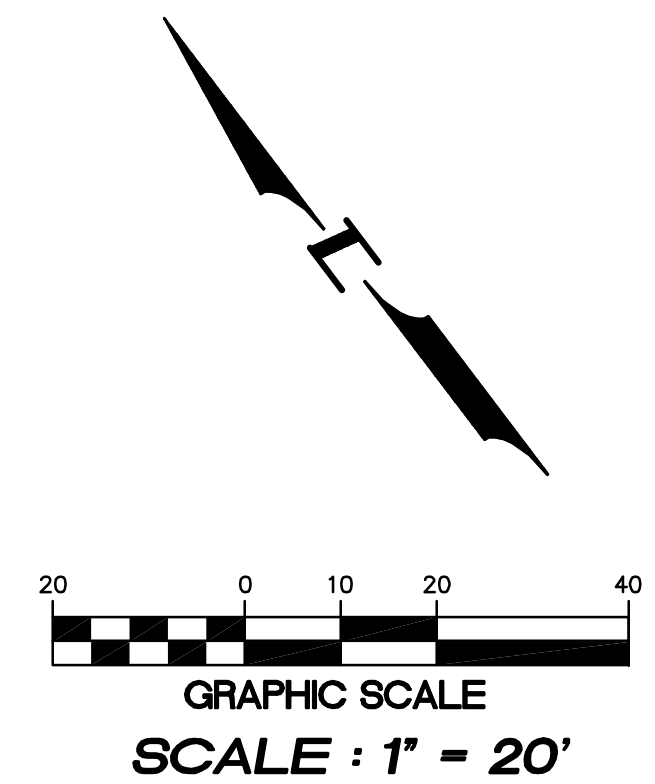


SEE SHEET C06 FOR CONTINUATION

NE1/4, SECTION 28, T.28 N., R.4 E., W.M.

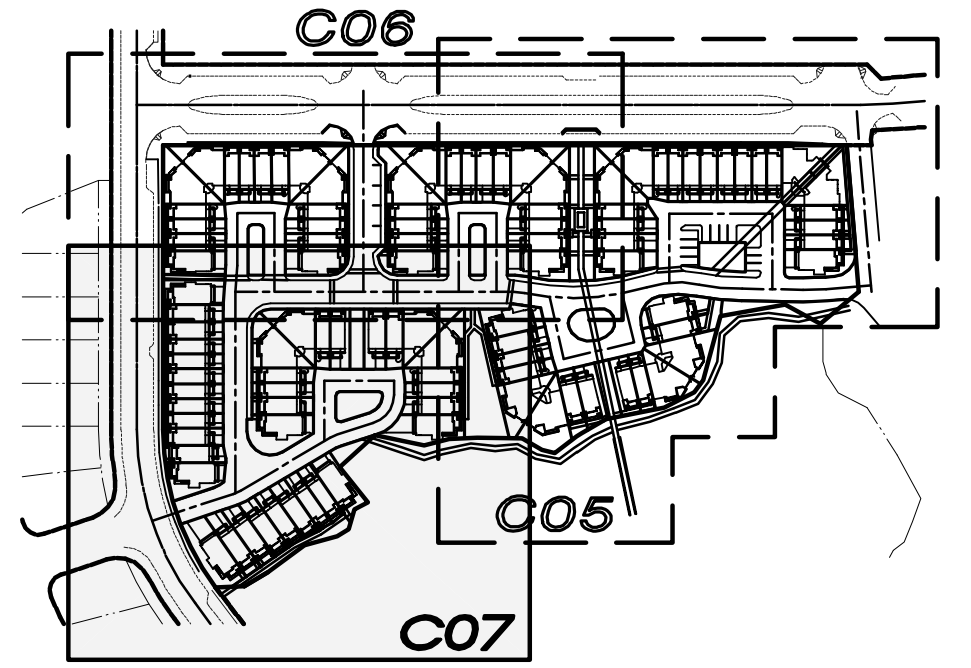


SEE SHEET C05 FOR CONTINUATION



LEGEND

	BOUNDARY / R.O.W. LINE
	CENTERLINE
	LOT LINE
	FF= 508.0
	EXISTING GROUND CONTOUR
	FINISHED GROUND CONTOUR
	CATCHBASIN (TYPE I)
	CATCHBASIN (TYPE II)
	CATCHBASIN (TYPE II) W/SOLID LOCKING LID
	STORM DRAIN CULVERT
	YARD DRAIN
	ROAD SLOPE ARROW
	FOOTING DRAIN/TIGHTLINE



NOTE:
THE LOCATIONS OF THE UTILITY VAULTS AND COMMON DRY UTILITY TRENCH DEPICTED ON THESE DRAWINGS ARE BASED ON PRELIMINARY DESIGN PROVIDED BY SNOHOMISH COUNTY PUD. FOR FINAL VAULT PLACEMENT AND TRENCH LOCATION, REFER TO APPROVED PUD UTILITY DRAWINGS.

HORIZONTAL DATUM :
CHINOOK DEVELOPMENT CORPORATION BINDING SITE PLAN AF #200103275001

BASIS OF BEARINGS :
CHINOOK DEVELOPMENT CORPORATION BINDING SITE PLAN AF #200103275001

VERTICAL DATUM :
TOP OF MONUMENT IN CASE AT THE INTERSECTION OF POINTES AND GREENHAVEN DRIVE.
ELEVATION : 512.13

NOTE :
ANY DAMAGE TO EXISTING STREETS AND/OR SIDEWALK DURING CONSTRUCTION MUST BE REPAIRED PRIOR TO FINAL CERTIFICATE OF OCCUPANCY BEING ISSUED.



4180 LIND AVE. S.W.
PUNTOON, WA 98055
PHONE: (425) 251-8811
FAX: (425) 251-8880
WEB SITE: PACENG.COM

Pacific Engineering Design, LLC
Civil Engineering and Planning Consultants

VILLAGE CENTER TOWNHOMES
MUKILTEO, WA.

FOR:
CHINOOK PACIFIC CORPORATION
12189 VILLAGE CENTER PLACE, SUITE 203
MUKILTEO, WA 98275
PHONE: (425) 348-0807, FAX: (425) 348-4977

PROJECT NO.: **04007**
DRAWN BY: **JGC**
ISSUE DATE: **06-16-04**
SHEET REV.: **08-10-04**

GRADING AND DRAINAGE PLAN

04007R01-C07.DWG
C07