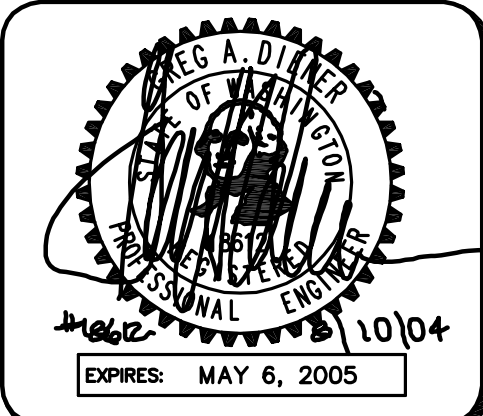


NE1/4, SECTION 28, T.28 N., R.4 E., W.M.



4180 LIND AVE. S.W.  
 RENTON, WA 98055  
 PHONE: (425) 251-8811  
 FAX: (425) 251-8880  
 WEB SITE: PACENG.COM

**Pacific Engineering Design, LLC**  
 Civil Engineering and Planning Consultants

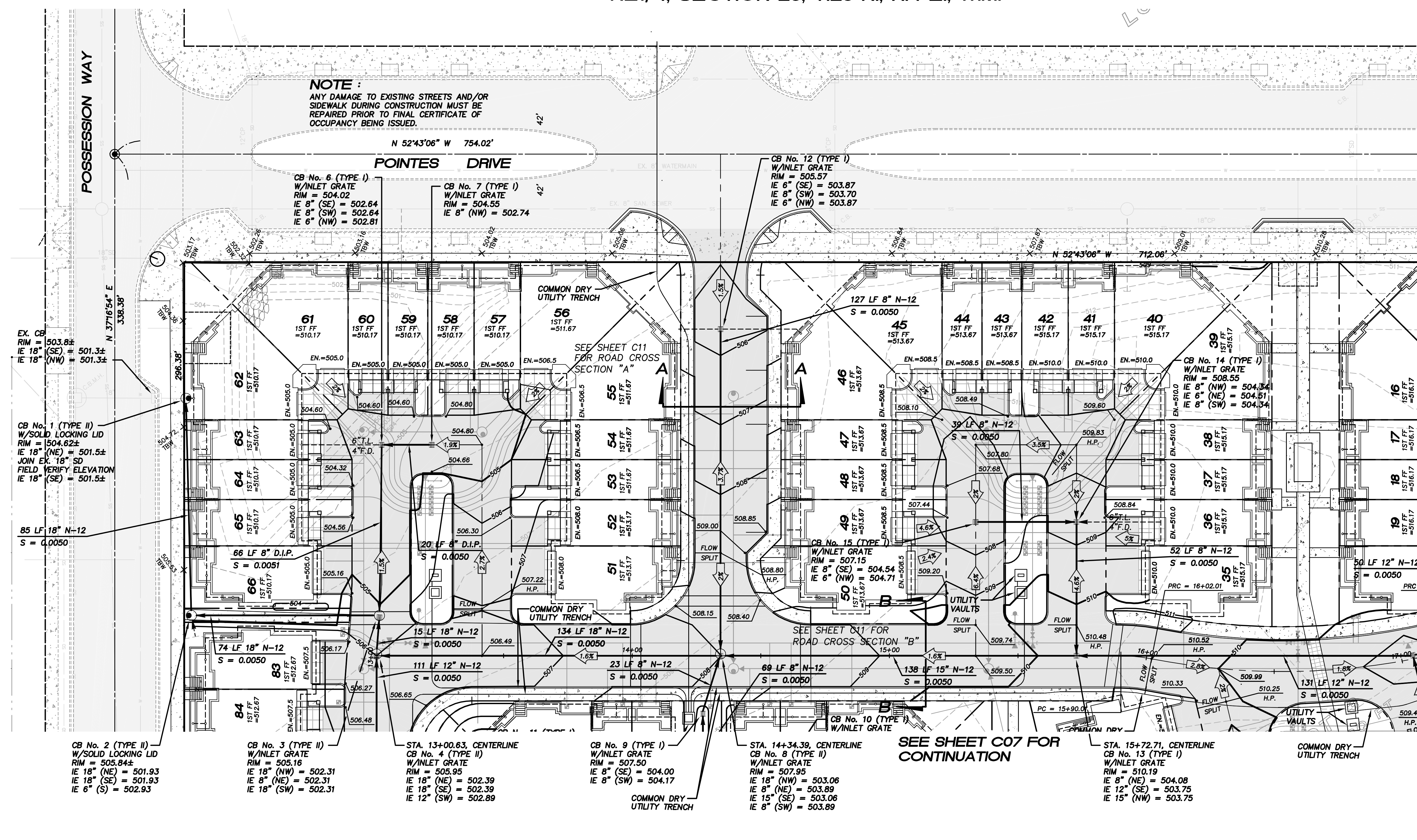
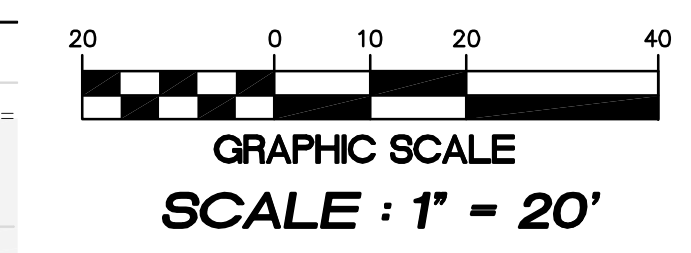
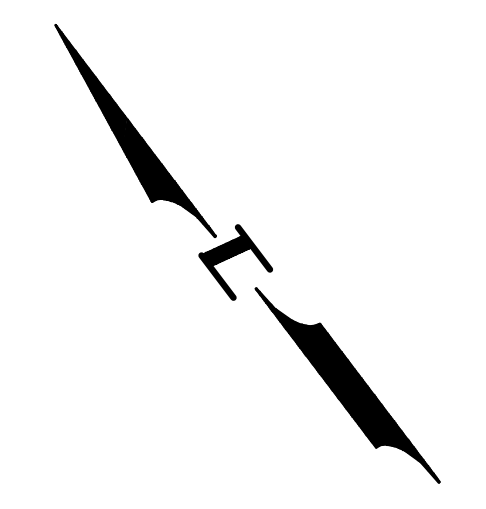
**VILLAGE CENTER TOWNHOMES**  
 MUKILTEO, WA.

FOR: CHINOOK PACIFIC CORPORATION  
 12899 VILLAGE CENTER PLACE, SUITE 203  
 MUKILTEO, WA 98275  
 PHONE: (425) 348-0807, FAX: (425) 348-4977

PROJECT NO.: **04007**  
 DRAWN BY: **JGC**  
 ISSUE DATE: **06-16-04**  
 SHEET REV.: **08-10-04**

**GRADING AND DRAINAGE PLAN**

04007R01-C06.DWG  
**C06**



**NOTE:**  
 ANY DAMAGE TO EXISTING STREETS AND/OR SIDEWALK DURING CONSTRUCTION MUST BE REPAIRED PRIOR TO FINAL CERTIFICATE OF OCCUPANCY BEING ISSUED.

**NOTE:**  
 THE LOCATIONS OF THE UTILITY VAULTS AND COMMON DRY UTILITY TRENCH DEPICTED ON THESE DRAWINGS ARE BASED ON PRELIMINARY DESIGN PROVIDED BY SNOHOMISH COUNTY PUD. FOR FINAL VAULT PLACEMENT AND TRENCH LOCATION, REFER TO APPROVED PUD UTILITY DRAWINGS.

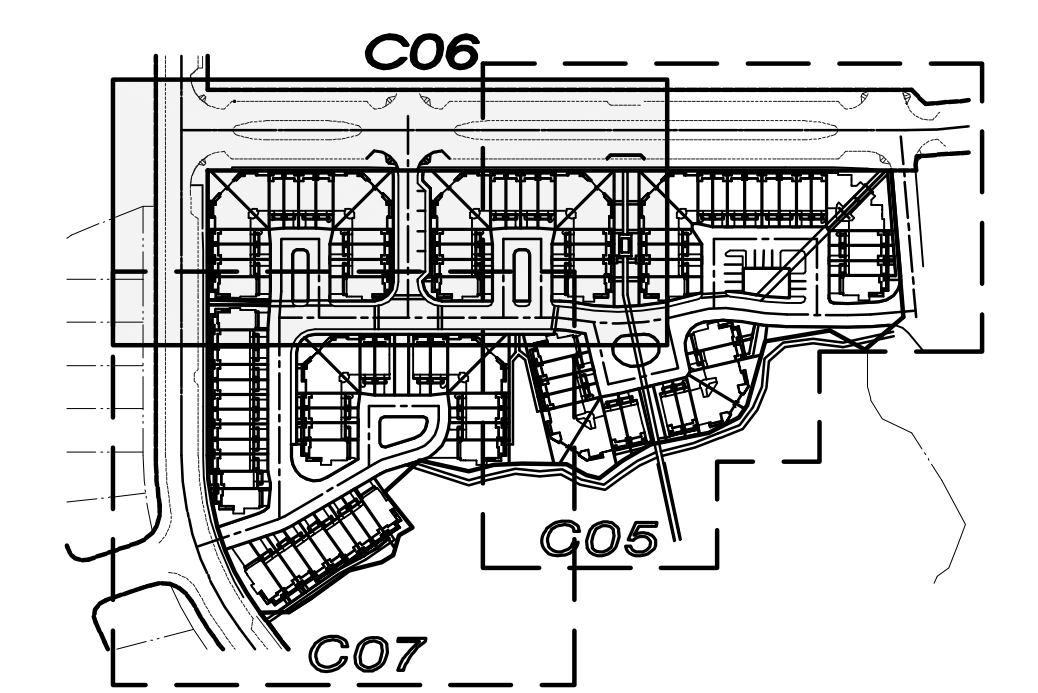
**HORIZONTAL DATUM:**  
 CHINOOK DEVELOPMENT CORPORATION BINDING SITE PLAN AF #200103275001

**BASIS OF BEARINGS:**  
 CHINOOK DEVELOPMENT CORPORATION BINDING SITE PLAN AF #200103275001

**VERTICAL DATUM:**  
 TOP OF MONUMENT IN CASE AT THE INTERSECTION OF POINTES AND GREENHAVEN DRIVE.  
 ELEVATION : 512.13

SEE SHEET C07 FOR CONTINUATION

SEE SHEET C05 FOR CONTINUATION



KEY MAP

**LEGEND**

	BOUNDARY / R.O.W. LINE
	CENTERLINE
	LOT LINE
	FINISHED FLOOR ELEVATION
	EXISTING GROUND CONTOUR
	FINISHED GROUND CONTOUR
	CATCHBASIN (TYPE I)
	CATCHBASIN (TYPE II)
	CATCHBASIN (TYPE II) W/SOLID LOCKING LID
	STORM DRAIN CULVERT
	YARD DRAIN
	ROAD SLOPE ARROW
	FOOTING DRAIN/TIGHTLINE
	4'-8"x4'-8"x3'-6" UTILITY VAULT
	1/2"x28" ACCESS HOLE
	4'-8"x4'-8"x3'-6" UTILITY VAULT W/3'x3' DIAMOND PLATE LID