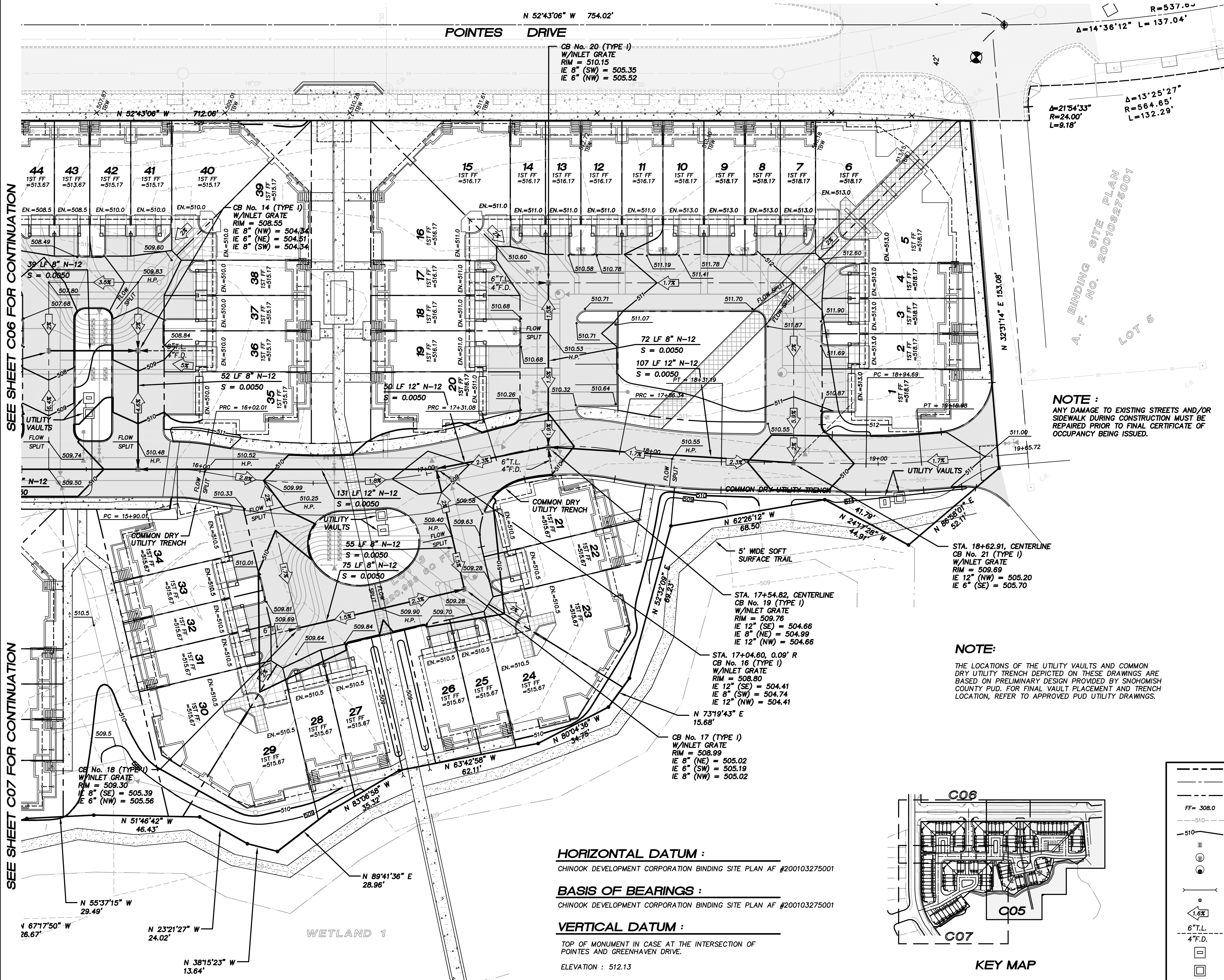


NE1/4, SECTION 28, T.28 N., R.4 E., W.M.



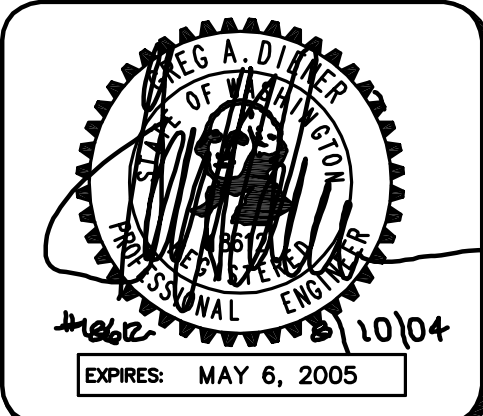
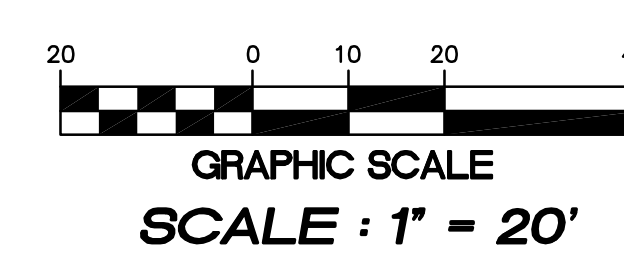
N 52°43'06" W 754.02'

POINTES DRIVE

R=537.00  
Δ=14°36'12" L=137.04'

Δ=21°54'33" R=24.00' L=9.18'

Δ=13°25'27" R=564.65' L=132.29'



4180 LIND AVE. S.W.  
RENTON, WA 98055  
PHONE: (425) 251-8811  
FAX: (425) 251-8880  
WEB SITE: PACENG.COM

**Pacific Engineering Design, LLC**  
Civil Engineering and Planning Consultants

**VILLAGE CENTER TOWNHOMES**  
MUKILTEO, WA.

FOR: CHINOOK PACIFIC CORPORATION  
1289 VILLAGE CENTER PLACE, SUITE 203  
MUKILTEO, WA 98275  
PHONE: (425) 348-0807, FAX: (425) 348-4977

PROJECT NO.: 04007  
DRAWN BY: JGC  
ISSUE DATE: 06-16-04  
SHEET REV.: 08-10-04

**GRADING AND DRAINAGE PLAN**

04007R01-C05.DWG  
**C05**

**HORIZONTAL DATUM :**  
CHINOOK DEVELOPMENT CORPORATION BINDING SITE PLAN AF #200103275001

**BASIS OF BEARINGS :**  
CHINOOK DEVELOPMENT CORPORATION BINDING SITE PLAN AF #200103275001

**VERTICAL DATUM :**  
TOP OF MONUMENT IN CASE AT THE INTERSECTION OF POINTES AND GREENHAVEN DRIVE.  
ELEVATION : 512.13

**NOTE :**  
ANY DAMAGE TO EXISTING STREETS AND/OR SIDEWALK DURING CONSTRUCTION MUST BE REPAIRED PRIOR TO FINAL CERTIFICATE OF OCCUPANCY BEING ISSUED.

**NOTE:**  
THE LOCATIONS OF THE UTILITY VAULTS AND COMMON DRY UTILITY TRENCH DEPICTED ON THESE DRAWINGS ARE BASED ON PRELIMINARY DESIGN PROVIDED BY SNOHOMISH COUNTY PUD. FOR FINAL VAULT PLACEMENT AND TRENCH LOCATION, REFER TO APPROVED PUD UTILITY DRAWINGS.

