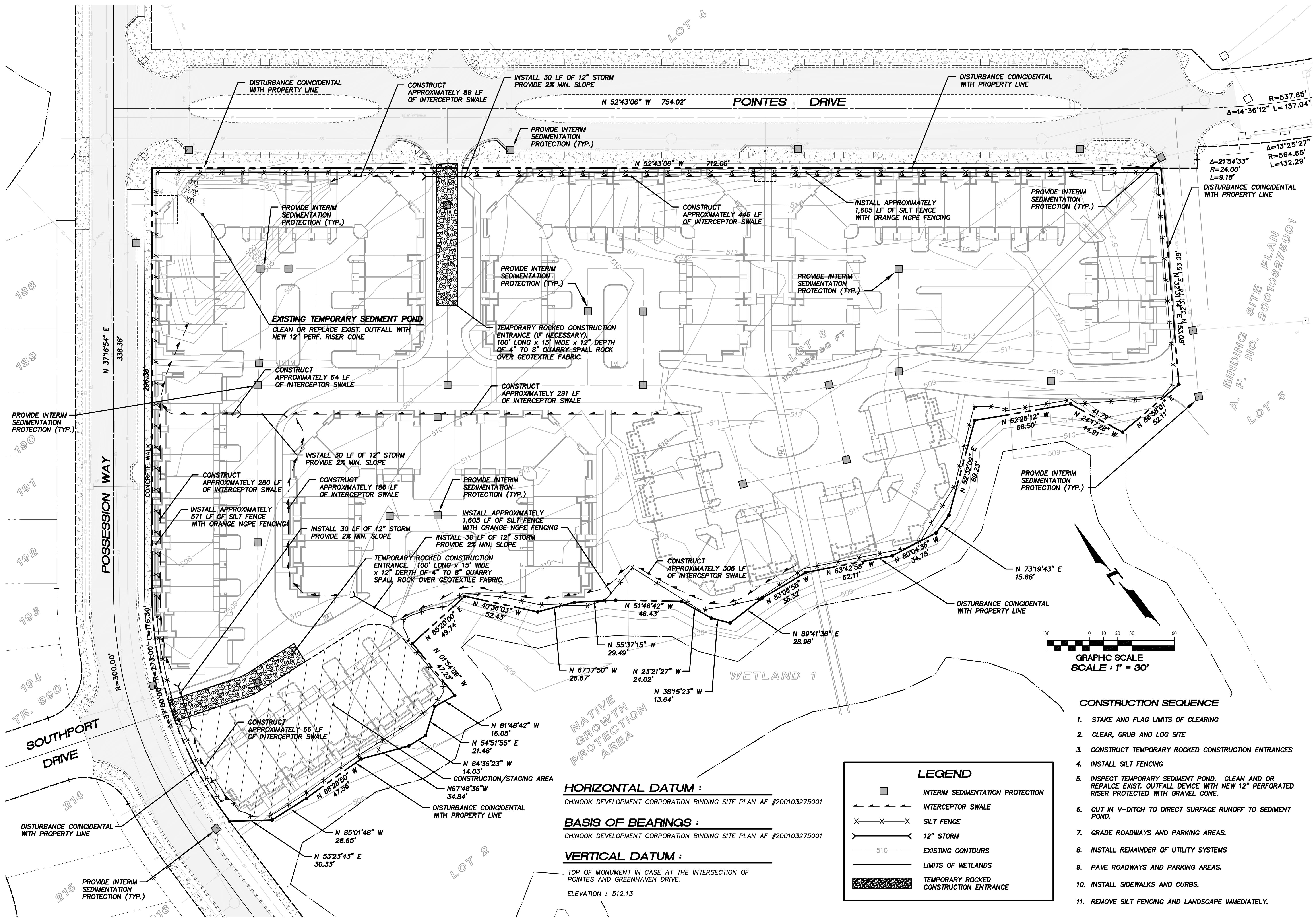


NE1/4, SECTION 28, T.28 N., R.4 E., W.M.



4180 LIND AVE. S.W.
 RENTON, WA 98055
 PHONE: (425) 251-8811
 FAX: (425) 251-8880
 WEB SITE: PACENG.COM

Pacific Engineering Design, LLC
 Civil Engineering and Planning Consultants

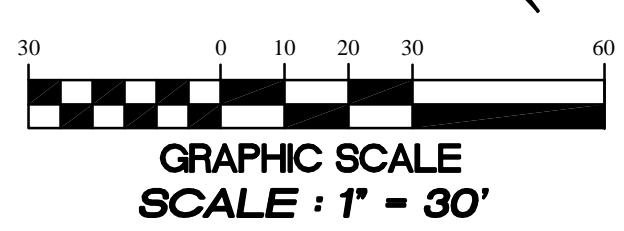
VILLAGE CENTER TOWNHOMES
 MUKILTEO, WA.

FOR: CHINOOK PACIFIC CORPORATION
 1289 VILLAGE CENTER PLACE, SUITE 203
 MUKILTEO, WA 98275
 PHONE: (425) 348-0807, FAX: (425) 348-4977

PROJECT NO.: **04007**
 DRAWN BY: **JGC**
 ISSUE DATE: **06-16-04**
 SHEET REV.: **08-10-04**

TEMPORARY EROSION CONTROL PLAN

04007E01-C04.DWG
C04



CONSTRUCTION SEQUENCE

1. STAKE AND FLAG LIMITS OF CLEARING
2. CLEAR, GRUB AND LOG SITE
3. CONSTRUCT TEMPORARY ROCKED CONSTRUCTION ENTRANCES
4. INSTALL SILT FENCING
5. INSPECT TEMPORARY SEDIMENT POND. CLEAN AND OR REPALCE EXIST. OUTFALL DEVICE WITH NEW 12" PERFORATED RISER PROTECTED WITH GRAVEL CONE.
6. CUT IN V-DITCH TO DIRECT SURFACE RUNOFF TO SEDIMENT POND.
7. GRADE ROADWAYS AND PARKING AREAS.
8. INSTALL REMAINDER OF UTILITY SYSTEMS
9. PAVE ROADWAYS AND PARKING AREAS.
10. INSTALL SIDEWALKS AND CURBS.
11. REMOVE SILT FENCING AND LANDSCAPE IMMEDIATELY.

LEGEND

	INTERIM SEDIMENTATION PROTECTION
	INTERCEPTOR SWALE
	SILT FENCE
	12" STORM
	EXISTING CONTOURS
	LIMITS OF WETLANDS
	TEMPORARY ROCKED CONSTRUCTION ENTRANCE

HORIZONTAL DATUM :
 CHINOOK DEVELOPMENT CORPORATION BINDING SITE PLAN AF #200103275001

BASIS OF BEARINGS :
 CHINOOK DEVELOPMENT CORPORATION BINDING SITE PLAN AF #200103275001

VERTICAL DATUM :
 TOP OF MONUMENT IN CASE AT THE INTERSECTION OF
 POINTES AND GREENHAVEN DRIVE.
 ELEVATION : 512.13

NATIVE GROWTH PROTECTION AREA

WETLAND 1

SITE PLAN
 200103275001
 A. F. NO.
 LOT 6