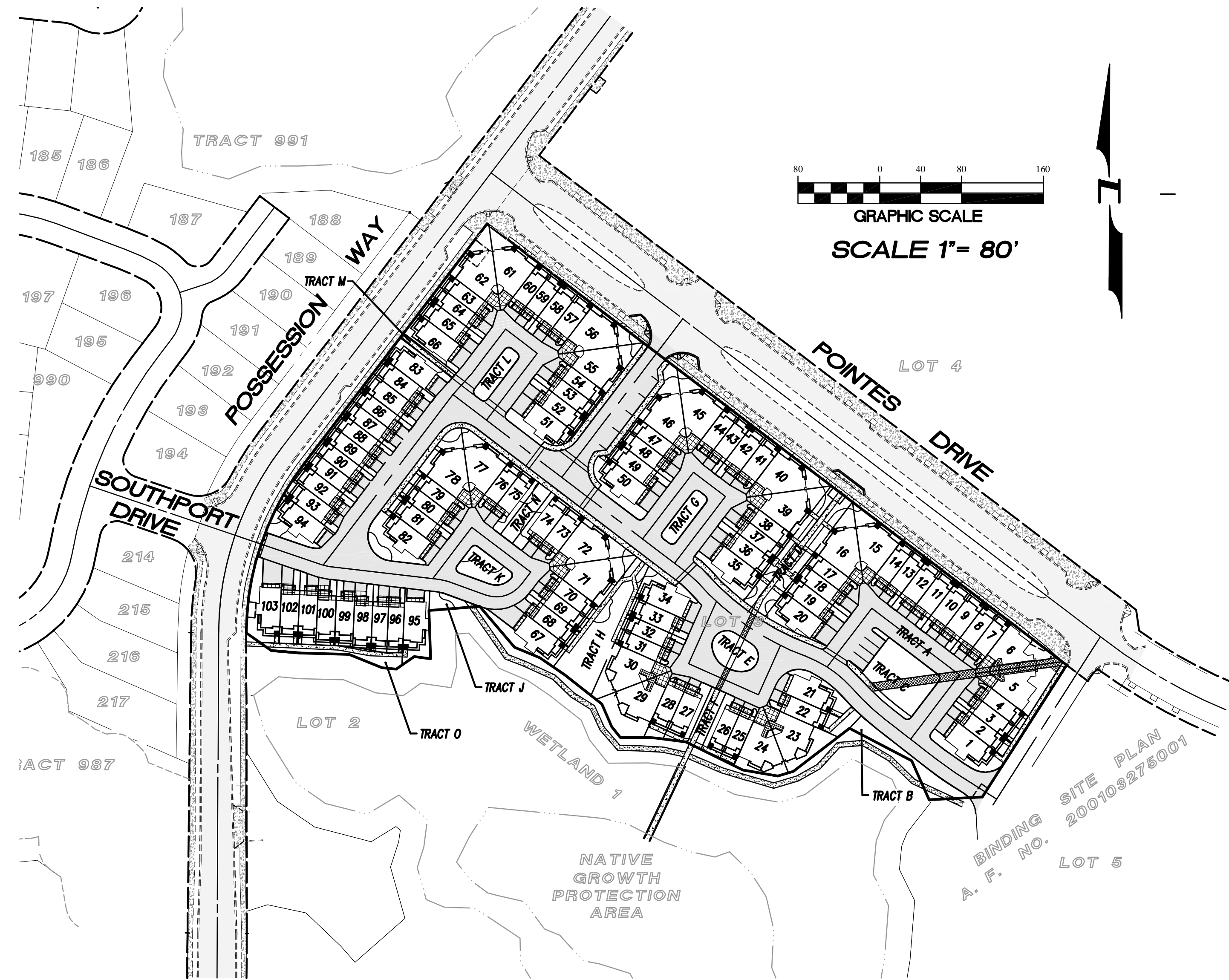


NE1/4, SECTION 28, T.28 N., R.4 E., W.M.

# VILLAGE CENTER TOWNHOMES

UTILITY PERMIT (103 LOT PLAT)

MUKILTEO, WA.



**SHEET INDEX:**

C01	COVER SHEET	
C02	COMPOSITE UTILITY PLAN	
C03	HORIZONTAL CONTROL PLAN	
C04	TEMPORARY EROSION CONTROL PLAN	
C05	GRADING AND DRAINAGE PLAN	
C06	GRADING AND DRAINAGE PLAN	
C07	GRADING AND DRAINAGE PLAN	
C08	ROAD A PROFILE	
C09	ROAD A PROFILE	
C10	DETAILS	
C11	DETAILS	
C12	DETAILS	
C13	EXISTING CONDITIONS	
SW1	ALDERWOOD WATER AND WASTEWATER DISTRICT SANITARY SEWER AND WATER COVER AND NOTES	(OMITTED)
SW2	ALDERWOOD WATER AND WASTEWATER DISTRICT SANITARY SEWER AND PHASE I WATER PLAN	(OMITTED)
SW3	ALDERWOOD WATER AND WASTEWATER DISTRICT PHASE II WATER PLAN	(OMITTED)
SW4	ALDERWOOD WATER AND WASTEWATER DISTRICT SANITARY SEWER PROFILE	(OMITTED)
SW5	ALDERWOOD WATER AND WASTEWATER DISTRICT SANITARY SEWER DETAILS	(OMITTED)
SW6	ALDERWOOD WATER AND WASTEWATER DISTRICT SANITARY SEWER DETAILS	(OMITTED)
SW7	ALDERWOOD WATER AND WASTEWATER DISTRICT SANITARY SEWER AND WATER DETAILS	(OMITTED)
SW8	ALDERWOOD WATER AND WASTEWATER DISTRICT WATER DETAILS	(OMITTED)
SW9	ALDERWOOD WATER AND WASTEWATER DISTRICT WATER DETAILS	(OMITTED)

**SITE STATISTICS:**

TOTAL ACREAGE	220,983 SF	5.1 AC
PROPOSED NO. OF LOTS:	103	
DENSITY	20.30	
AVERAGE LOT SIZE:	1,300 SF	
SMALLEST LOT SIZE:	854 SF	
LARGEST LOT SIZE:	2,510 SF	
No. OF ERU'S	103	

**JURISDICTIONS:**

WATER:	ALDERWOOD WATER AND SEWER DISTRICT
SEWER:	ALDERWOOD WATER AND SEWER DISTRICT
POWER:	SNOHOMISH COUNTY P.U.D.
TELEPHONE:	VERIZON
GAS:	SNOHOMISH COUNTY P.U.D.
FIRE:	FIRE DISTRICT #1/ CITY OF MUKILTEO
SCHOOL:	MUKILTEO SCHOOL DISTRICT

**LEGAL DESCRIPTION:**

LOT 3, CHINOOK DEVELOPMENT CORPORATION BINDING SITE PLAN RECORDED UNDER AUDITOR'S FILE NO. 200103275001, RECORDS OF SNOHOMISH COUNTY, WASHINGTON.

SUBJECT TO EASEMENTS, RESTRICTIONS AND RESERVATIONS OF RECORD.

**HORIZONTAL DATUM :**

CHINOOK DEVELOPMENT CORPORATION BINDING SITE PLAN AF #200103275001

**BASIS OF BEARINGS :**

CHINOOK DEVELOPMENT CORPORATION BINDING SITE PLAN AF #200103275001

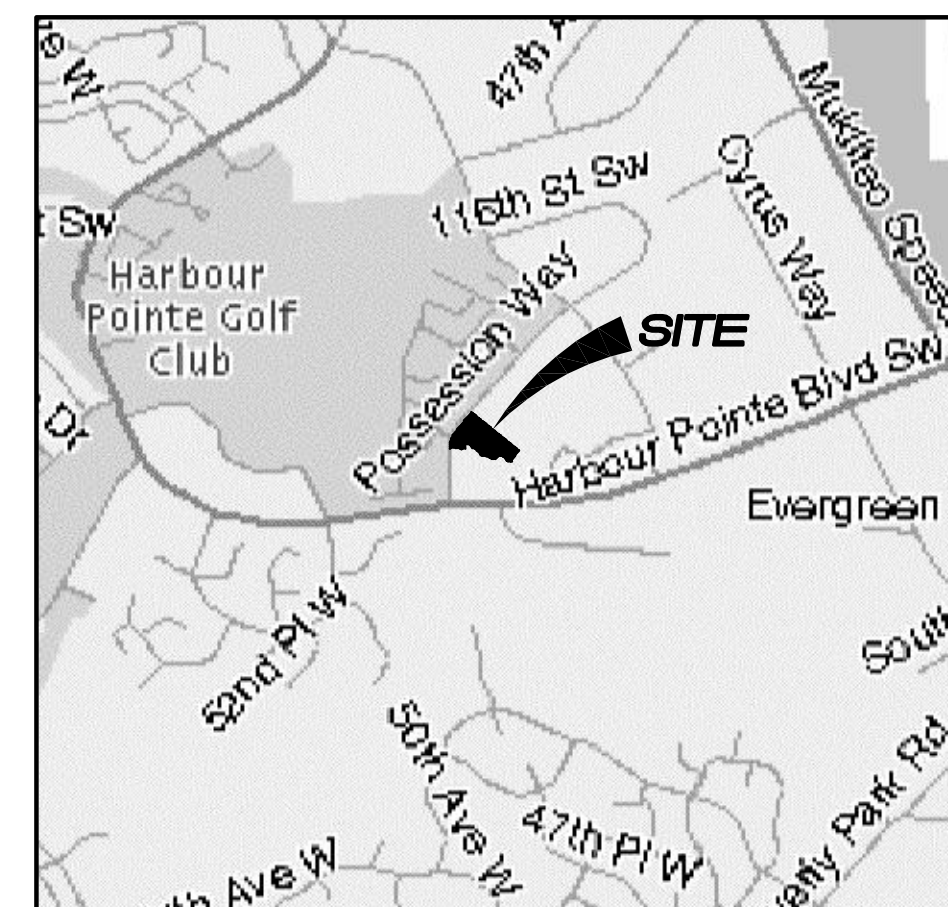
**VERTICAL DATUM :**

TOP OF MONUMENT IN CASE AT THE INTERSECTION OF POINTES AND GREENHAVEN DRIVE.

ELEVATION : 512.13

**EARTHWORK VOLUMES :**

CUT VOLUME :	FILL VOLUME :	STRIPPING VOLUME :
6,161 CY	3,963 CY	4,076 CY



**VICINITY MAP**  
NTS

**SITE INFORMATION:**

**ARCHITECT:**  
RUTLEDGE MAUL ARCHITECTS, P.S., INC.  
19339 47th AVE. N.E.  
SEATTLE, WA. 98155  
PHONE (206) 440-0330  
FAX (206) 362-4381

**GEOTECHNICAL ENGINEER:**  
GOLDER ASSOCIATES, Inc.  
18300 NE UNION HILL ROAD, SUITE 200  
REDMOND, WA. 98052-3333  
PHONE: (425) 883-0777  
FAX: (425) 882-5498

**LANDSCAPE ARCHITECT:**  
GLENN TAKAGI LANDSCAPE ARCHITECT  
18550 FIRLANDS WAY N, #102  
SHORELINE, WA., 98133  
PHONE (206) 542-6100  
FAX (206) 546-1128

**CIVIL ENGINEER:**  
PACIFIC ENGINEERING DESIGN LLC.  
4180 LIND AVENUE SW  
RENTON, WA. 98055-4973  
PHONE (425) 251-8811  
FAX (425) 251-8880

**SURVEYOR:**  
LOVELL-SAUERLAND & ASSOCIATES, INC.  
19400 33rd AVENUE W., SUITE 200  
LYNNWOOD, WA. 98036  
PHONE: (425) 775-1591  
FAX: (425) 672-7998



4180 LIND AVE. S.W.  
RENTON, WA 98055  
PHONE: (425) 251-8811  
FAX: (425) 251-8880  
WEB SITE: PACENG.COM

**Pacific Engineering Design, LLC**

Civil Engineering and Planning Consultants

**VILLAGE CENTER TOWNHOMES**  
MUKILTEO, WA.

FOR:  
CHINOOK PACIFIC CORPORATION  
12899 VILLAGE CENTER PLACE, SUITE 203  
MUKILTEO, WA. 98275  
PHONE: (425) 348-0807, FAX: (425) 348-4977

PROJECT NO.: **04007**

DRAWN BY: **JGC**

ISSUE DATE: **06-16-04**

SHEET REV.: **08-10-04**

COVER SHEET

04007CV01-C01.DWG

**C01**