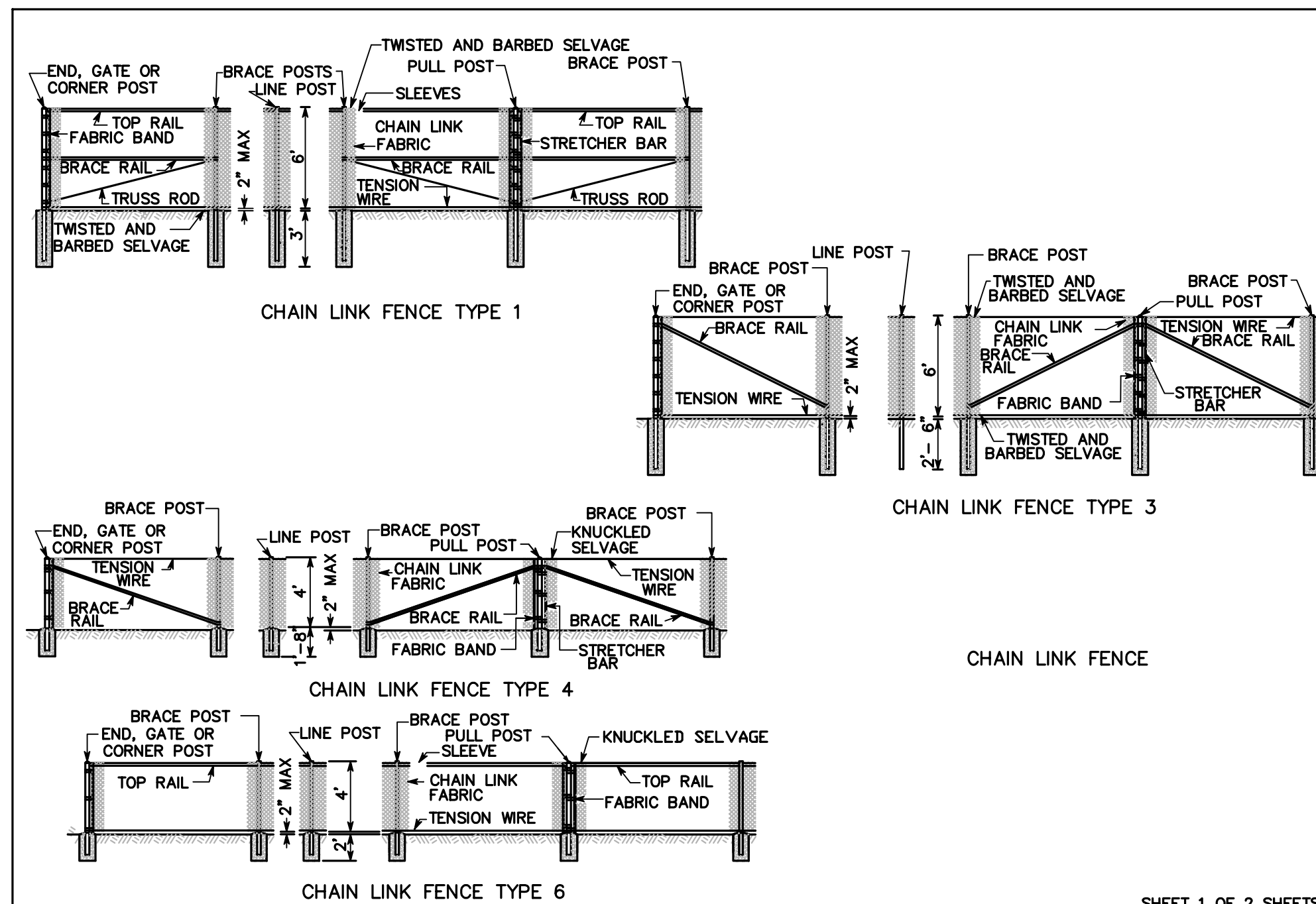


- NOTES:**
- EXCEPT AS SHOWN OR NOTED, UNITS SHALL BE CONSTRUCTED IN ACCORDANCE WITH THE REQUIREMENTS FOR CATCHBASIN TYPE 2 54" MINIMUM DIAMETER.
  - FOR DETAILS SHOWING GRADE RING, LADDER, STEPS, HANDHOLDS AND TOP SLABS, SEE STD DWG 5-120, CATCHBASIN DETAILS.
  - THE RESTRICTOR/SEPARATOR AND PIPE SUPPORTS SHALL BE OF THE SAME MATERIAL AND SHALL BE FABRICATED FROM 0.060" ALUMINUM OR 0.064" ALUMINIZED STEEL OR 0.064" GALVANIZED STEEL PIPE IN ACCORDANCE WITH ASHTO M 36, M 196, M197 AND M274. GALVANIZED STEEL SHALL HAVE TREATMENT 1.
  - OUTLET SHALL BE CONNECTED TO CULVERT OR SEWER PIPE WITH A STANDARD COUPLING BAND FOR CORRUGATED METAL PIPE OR GROUTED INTO THE BELL OF CONCRETE PIPE.
  - THE VERTICAL RISER STEM OF THE RESTRICTOR/SEPARATOR SHALL BE THE SAME DIAMETER AS THE HORIZONTAL OUTLET PIPE WITH A 8" MINIMUM SIZE.
  - FRAME AND LADDER OR STEPS TO BE OFFSET SO THAT (1) CLEANOUT GATE IS VISIBLE FROM TOP. (2) CLIMB-DOWN SPACE IS CLEAR OF RISER AND CLEANOUT GATE. (3) FRAME IS CLEAR OF CURB (IF ANY EXIST).
  - MULTI-ORIFICE ELBOWS MAY BE LOCATED AS SHOWN ON ONE SIDE OF RISER TO ASSURE LADDER CLEARANCE. SIZE OF ELBOWS TO BE DETERMINED BY THE ENGINEER.
  - RESTRICTOR PLATE WITH ORIFICE AS SPECIFIED IN THE PLANS. OMIT PLATE IF ONLY FOR POLLUTION CONTROL. SPECIFIED OPENING TO BE CUT ROUND AND SMOOTH.
  - CLEANOUT GATE/SHEAR GATE : ALUMINUM ALLOY PER ASTM B26-2G32A OR CAST IRON ASTM A48 CLASS 30B AS REQUIRED. LIFT HANDLE EITHER SOLID OR TUBING WITH ADJUSTABLE HOOK AS REQUIRED. NEOPRENE RUBBER GASKETS REQUIRED BETWEEN FLANGES.
  - ALTERNATE CLEANOUT GATES/SHEAR GATES TO THE DESIGN SHOWN ON STD DWG 5-250 ARE ACCEPTABLE PROVIDED THEY MEET THE MATERIAL SPECIFICATIONS ABOVE AND HAVE A SIX BOLT, 10 3/8" BOLT CIRCLE FOR BOLTING TO THE FLANGE CONNECTION. 5/8" DIAMETER STAINLESS STEEL EXPANSION BOLTS SHALL BE USED.
  - RESTRICTOR TEES MAY BE FABRICATED (EXTRUSION WELDED) FROM DOUBLE WALLED (SMOOTH INTERIOR) CORRUGATED POLYETHYLENE PIPE MEETING THE REQUIREMENTS OF SECTION 5-04.4 OF THESE STANDARDS. PIPE SUPPORTS FOR RESTRICTOR SHALL BE FABRICATED FROM THOSE MATERIALS LISTED IN NOTE 3 ABOVE. THE OUTLET SHALL BE CONNECTED TO CULVERT OR SEWER PIPE WITH A PREMIUM COUPLING, BY USING A HEAT SHRINK ADAPTER TO OTHER TYPES OF PIPE, OR BY FABRICATING A SMOOTH OR TAPERED OUTLET TO SLIP INSIDE OF THE CULVERT OR SEWER PIPE.

WSDOT/APWA PLAN B-3  
SEE TEXT SECTION 5-09

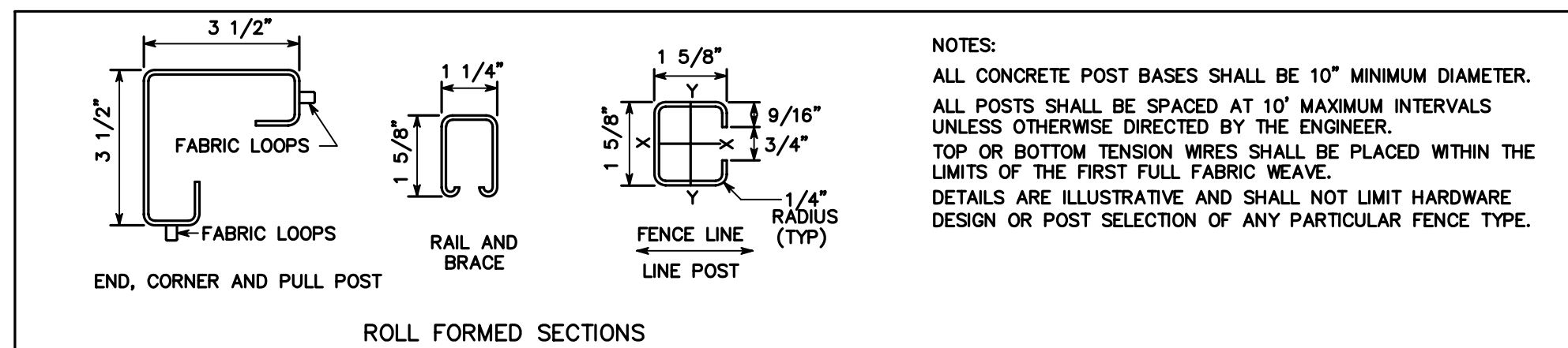
P:\dd\04092 Clearview Jiffy Lube\dwg\04092DL01.dwg

SNOHOMISH COUNTY PUBLIC WORKS		APPROVED BY:	
5-240A	FLOW RESTRICTOR/ OIL POLLUTION CONTROL RESTRICTOR	COUNTY ROAD ENGINEER	DATE



SHEET 1 OF 2 SHEETS

7/18/97



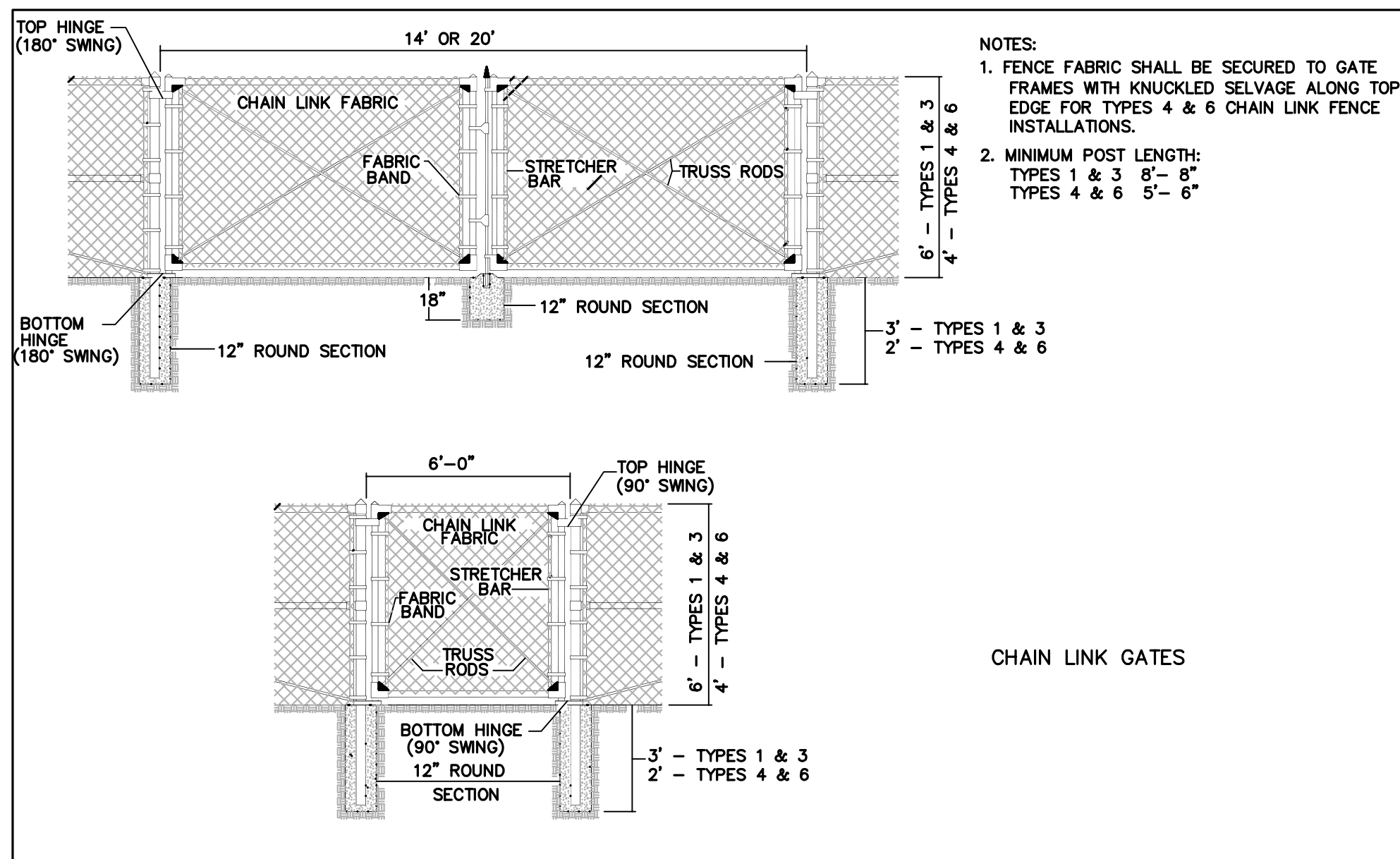
- NOTES:**
- ALL CONCRETE POST BASES SHALL BE 10" MINIMUM DIAMETER.
  - ALL POSTS SHALL BE SPACED AT 10' MAXIMUM INTERVALS UNLESS OTHERWISE DIRECTED BY THE ENGINEER.
  - TOP OR BOTTOM TENSION WIRES SHALL BE PLACED WITHIN THE LIMITS OF THE FIRST FULL FABRIC WEAVE.
  - DETAILS ARE ILLUSTRATIVE AND SHALL NOT LIMIT HARDWARE DESIGN OR POST SELECTION OF ANY PARTICULAR FENCE TYPE.

TYPE	MEMBER				ALL POSTS									
	BRACE RAIL & TOP RAIL		LINE & BRACE POST											
	ROUND	H-COLUMN	ROLL FORMED	ROUND	H-COLUMN	ROLL FORMED	ROUND	H-COLUMN	ROLL FORMED	ROUND	END, CORNER, & PULL POST	GATE POST	ALL POSTS	
	LD. (INCHES)	WEIGHT PER FOOT (POUNDS)	SIZE (INCHES)	WEIGHT PER FOOT (POUNDS)	LD. (INCHES)	WEIGHT PER FOOT (POUNDS)	SIZE (INCHES)	WEIGHT PER FOOT (POUNDS)	LD. (INCHES)	WEIGHT PER FOOT (POUNDS)	SIZE (INCHES)	WEIGHT PER FOOT (POUNDS)	LD. (INCHES)	WEIGHT PER FOOT (POUNDS)
1	1 1/4	2.27	1 1/4x1 5/8	1.35	1 5/8x1 1/4	1.35	2	3.65	2 1/4	4.0	1 5/8x1 7/8	2.34	2 1/2	5.79
3	1 1/4	2.27	1 1/4x1 5/8	1.35	1 5/8x1 1/4	1.35	1 1/2	2.72	1 7/8	2.72	1 5/8x1 7/8	1.85	2	3.65
4	1 1/4	2.27	1 1/4x1 5/8	1.35	1 5/8x1 1/4	1.35	1 1/2	2.72	1 7/8	2.72	1 5/8x1 7/8	1.85	2	3.65
6	1 1/4	2.27	1 1/4x1 5/8	1.35	1 5/8x1 1/4	1.35	2	3.65	2 1/4	4.0	1 5/8x1 7/8	2.34	2 1/2	5.79

CHAIN LINK FENCE

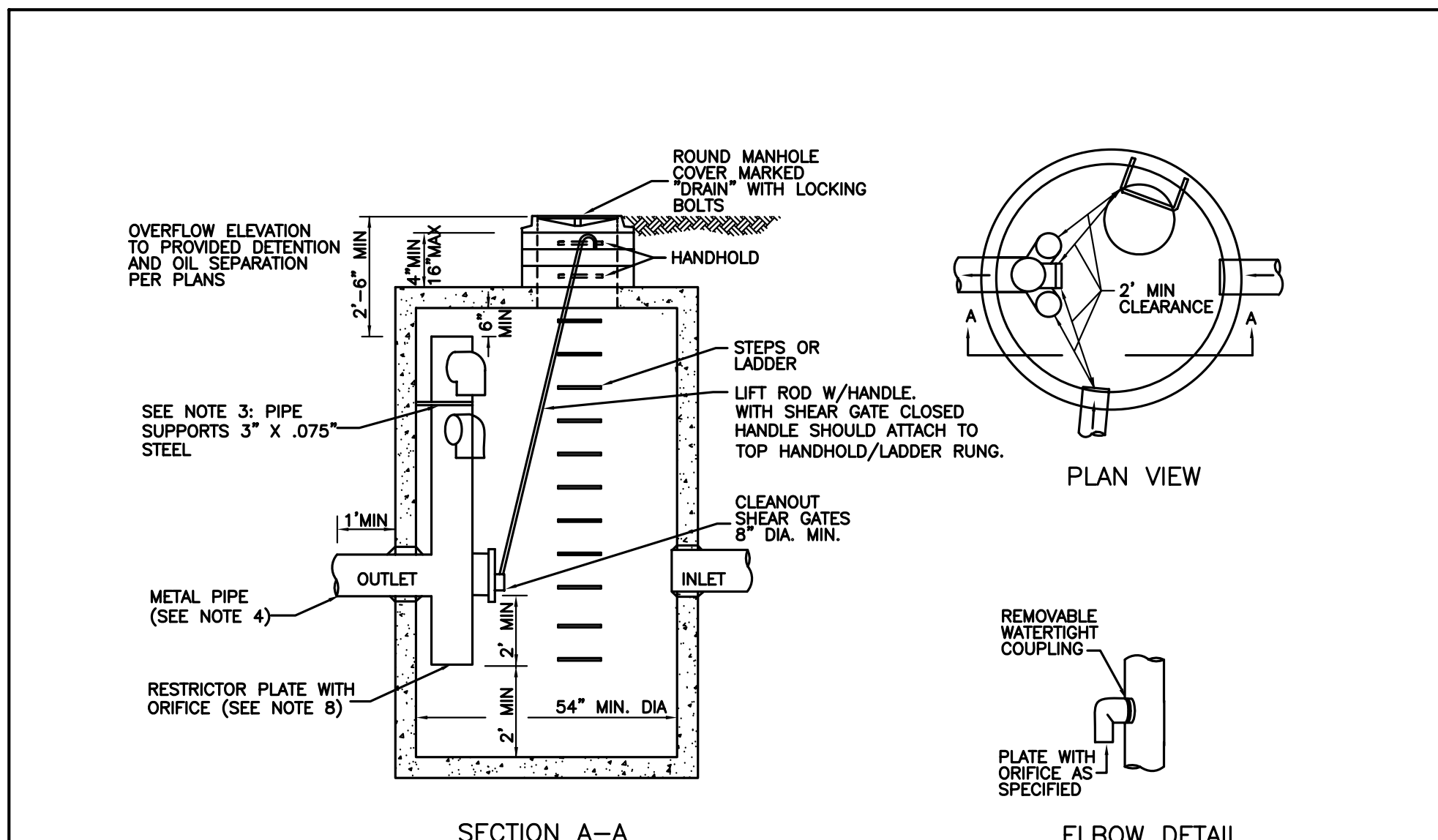
SHEET 2 OF 2 SHEETS

7/18/97



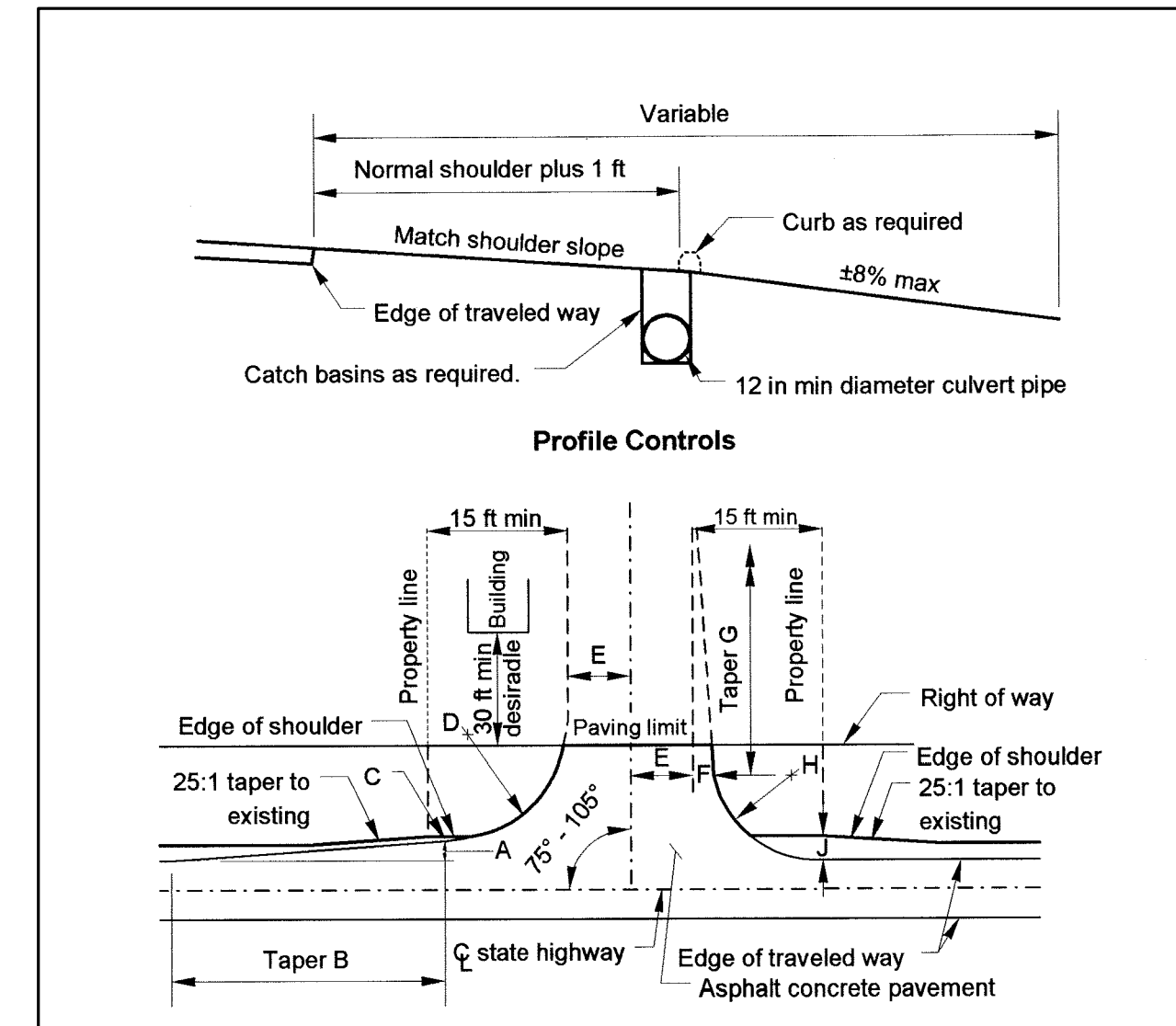
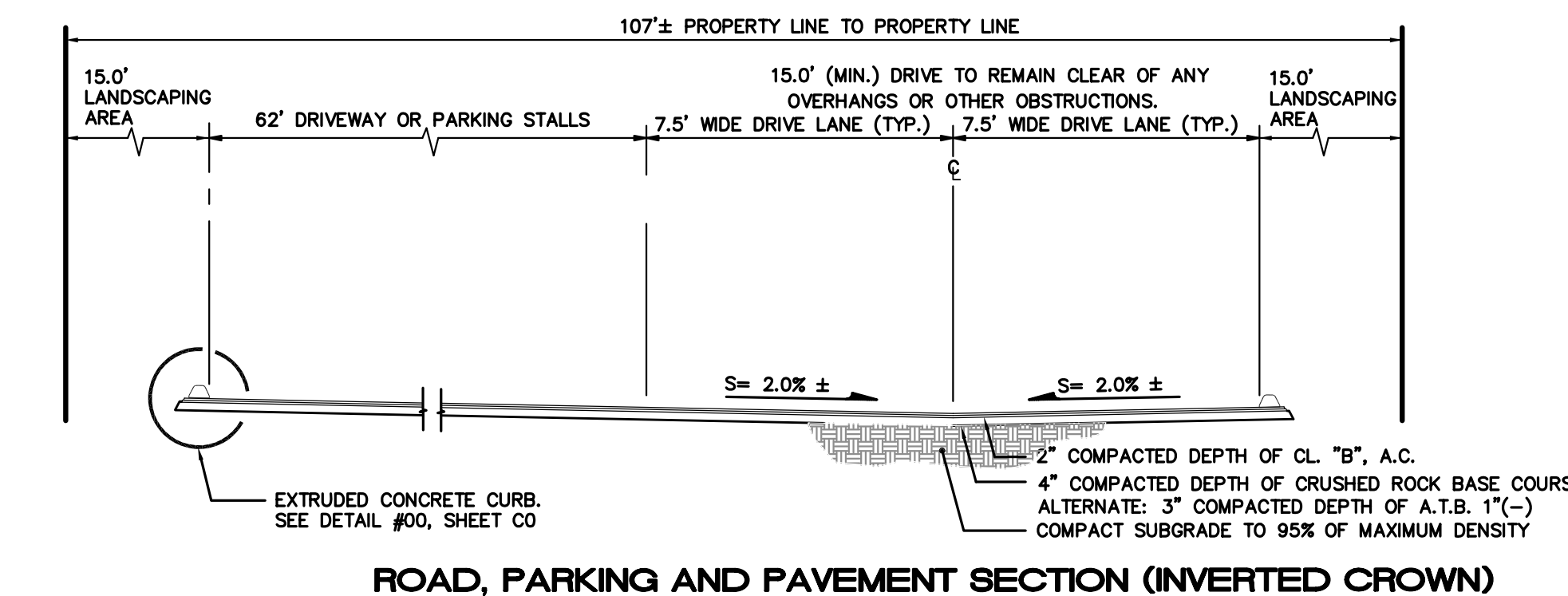
- NOTES:**
- FENCE FABRIC SHALL BE SECURED TO GATE FRAMES WITH KNUCKLED SELVAGE ALONG TOP EDGE FOR TYPES 4 & 6 CHAIN LINK FENCE INSTALLATIONS.
  - MINIMUM POST LENGTH: TYPES 1 & 3 8'-0" ALTERNATE: 3' COMPACTED DEPTH OF A.T.B. 17(-) TYPES 4 & 6 5'-0"

7/18/97



P:\dd\04092 Clearview Jiffy Lube\dwg\04092DL01.dwg

SNOHOMISH COUNTY PUBLIC WORKS		APPROVED BY:	
5-240B	FLOW RESTRICTOR/ OIL POLLUTION CONTROL RESTRICTOR	COUNTY ROAD ENGINEER	DATE



Condition	A	B	C	D	E	F	G	H	J
Primary SU and less	—	—	(2)	30	15	—	—	30	(2)
Primary combination Vehicle WB 40	—	—	(2)	65	15	—	—	55	(2)
Primary combination Vehicle WB 50 and doubles	4	25	(3)	50	15	7	25	45	(2)
	—	—	(2)	70	20	—	—	50	(2)
	4	25	(3)	55	20	—	—	50	(2)

- Notes:**
- All values in ft.
  - Normal shoulder width. (See Chapter 440.)
  - Normal shoulder width less A.
  - For larger vehicles, use turning templates. (See Chapter 310.)
  - Vertical curves between the shoulder slope and the road approach grade not to exceed a 3/4 in hump or a 2 in depression in a 10 ft cord.

Road Approach Design Template D1  
Figure 920-5



480 LIND AVE. S.W.  
RENTON, WA 98055  
PHONE: (425) 251-8811  
FAX: (425) 251-8880  
WEB SITE: PACENG.COM

Pacific Engineering Design, LLC  
Civil Engineering and Planning Consultants

CLEARVIEW JIFFY LUBE

FOR:  
DARRILL WILSON  
COMMERCIAL COMPANIES  
P.O. BOX 58187  
RENTON, WA 98058  
PHONE: (425) 687-0193, FAX: (206) 219-4153

PROJECT NO.: 04092  
DRAWN BY: TLR  
ISSUE DATE: 05-04-05  
SHEET REV.: 10-26-05

DETAILS

P:\dd\04092 Clearview Jiffy Lube\dwg\04092DL01.dwg

C07  
SHEET 07 OF 07

Snohomish County Planning and Development Services  
APPROVED FOR CONSTRUCTION (OR GRADING in the case of grading permits)

BY: \_\_\_\_\_  
for Randolph R. Sleight, P.E., P.L.S.  
PFN: 05-119975