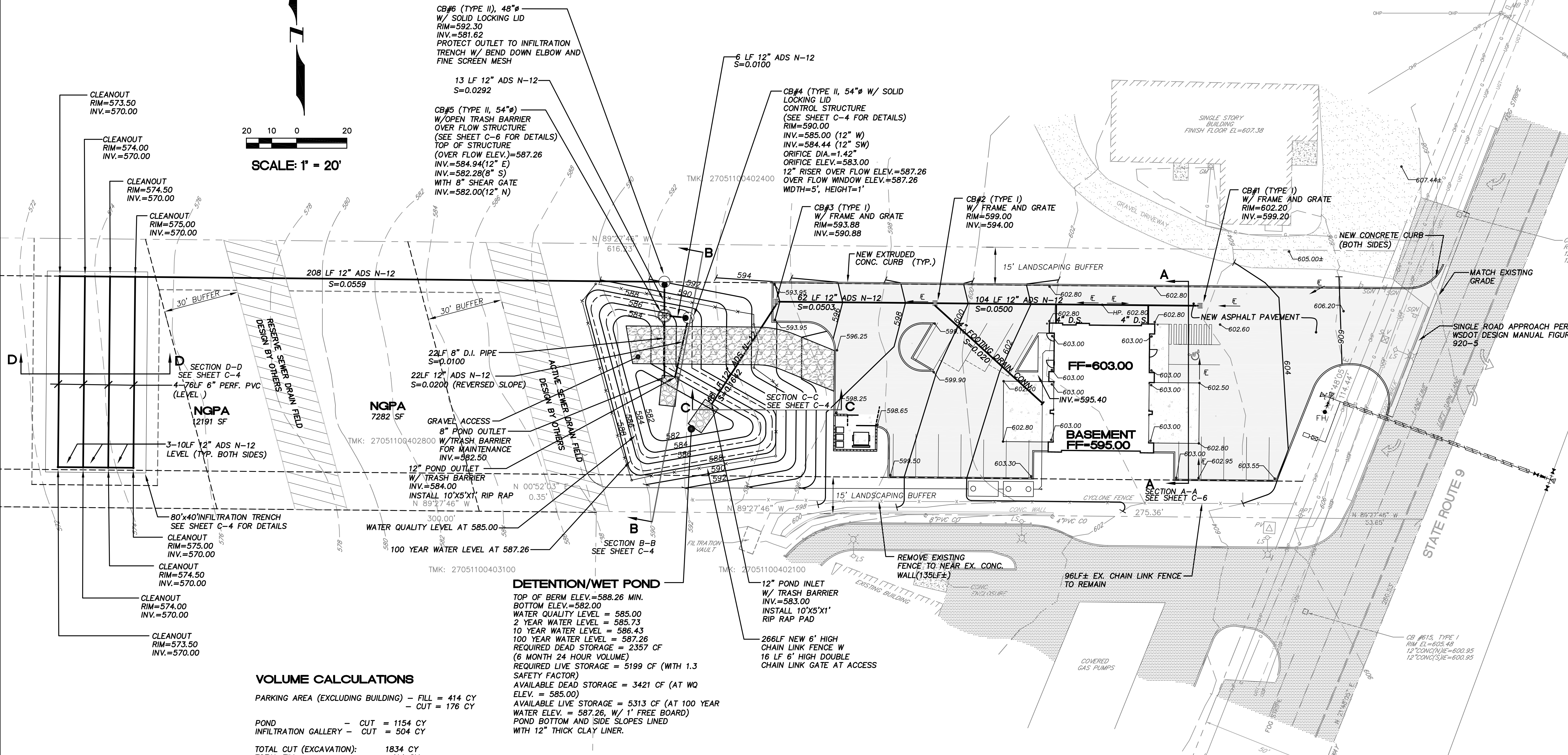
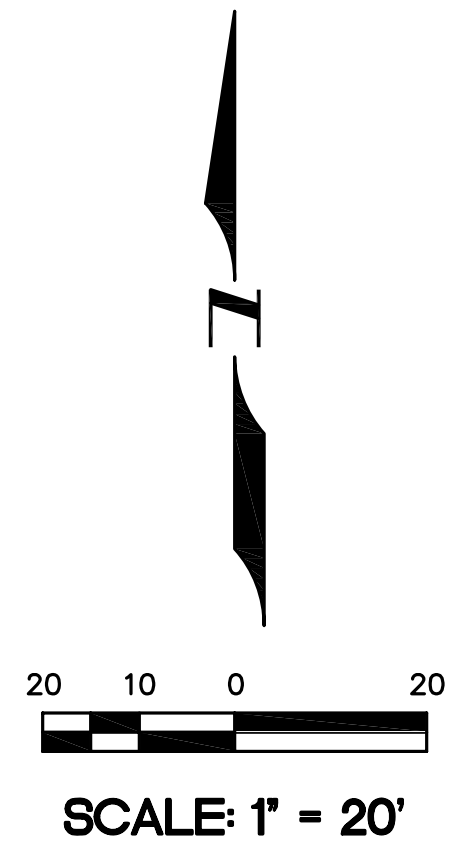


SECTION 11, TOWNSHIP 27 NORTH, RANGE 5, W.M.



**VOLUME CALCULATIONS**

PARKING AREA (EXCLUDING BUILDING) - FILL = 414 CY  
 - CUT = 176 CY

POND INFILTRATION GALLERY - CUT = 1154 CY  
 - CUT = 504 CY

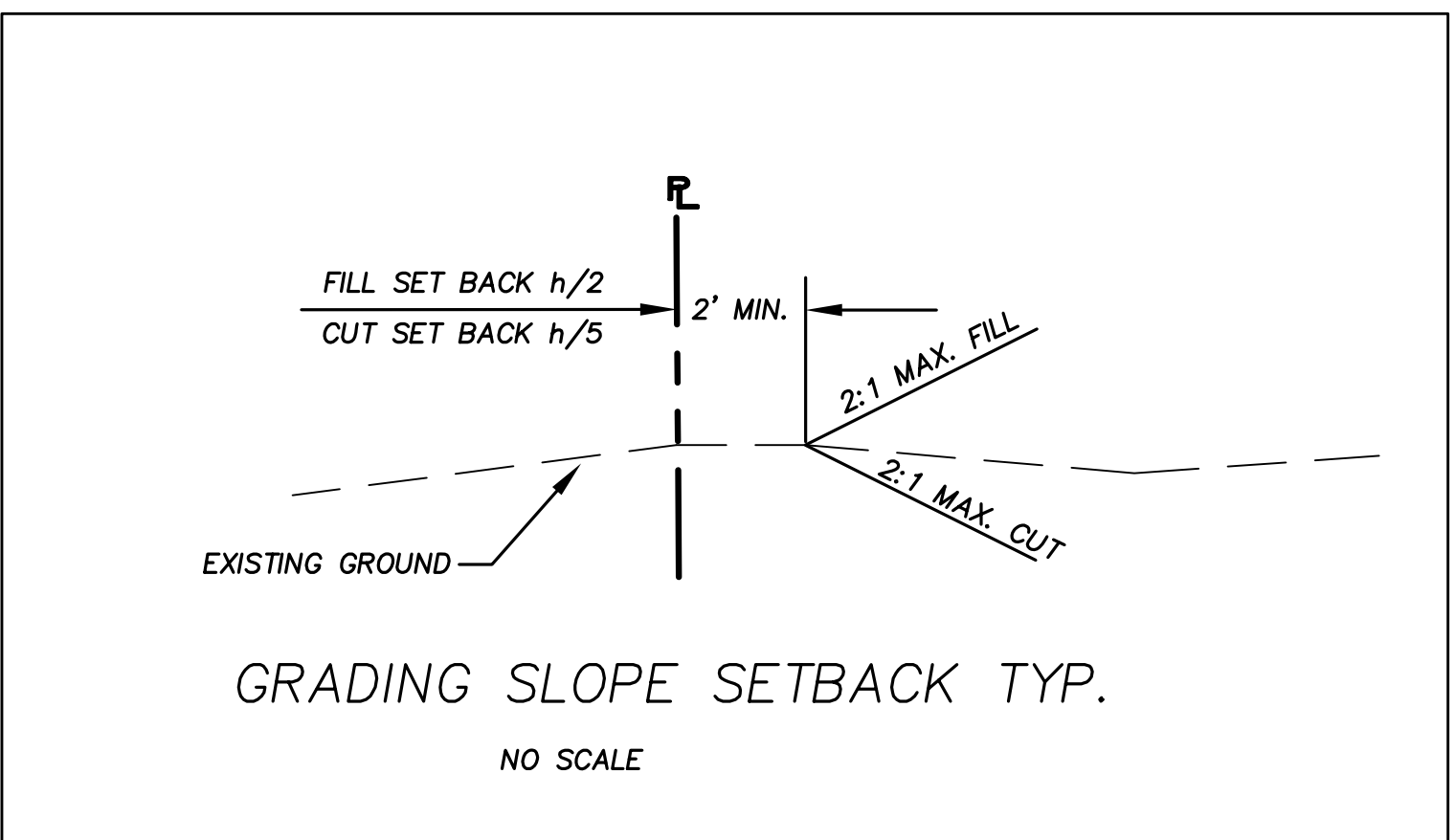
TOTAL CUT (EXCAVATION): 1834 CY  
 TOTAL FILL: 414 CY

**DETENTION/WET POND**

TOP OF BERM ELEV.=588.26 MIN.  
 BOTTOM ELEV.=582.00  
 WATER QUALITY LEVEL = 585.00  
 2 YEAR WATER LEVEL = 585.73  
 10 YEAR WATER LEVEL = 586.43  
 100 YEAR WATER LEVEL = 587.26  
 REQUIRED DEAD STORAGE = 2357 CF  
 (6 MONTH 24 HOUR VOLUME)  
 REQUIRED LIVE STORAGE = 5199 CF (WITH 1.3 SAFETY FACTOR)  
 AVAILABLE DEAD STORAGE = 3421 CF (AT WQ ELEV. = 585.00)  
 AVAILABLE LIVE STORAGE = 5313 CF (AT 100 YEAR WATER ELEV. = 587.26, W/ 1' FREE BOARD)  
 POND BOTTOM AND SIDE SLOPES LINED WITH 12" THICK CLAY LINER.

**DETENTION PERFORMANCE CHART**

STORM	VOLUME STORAGE REQUIRED (CU FT)					MAXIMUM RELEASE RATE (CFS)			
	WATER SURFACE ELEVATION	DEAD	LIVE	LIVE W/ SAFETY FACTOR 1.3	DESIGN	AS-BUILT	RATE	DESIGNED	AS-BUILT
2YR	585.73		1109	1442	1540		0.047	0.043	
10YR	586.43		2327	3025	3130		0.066	0.061	
100YR	587.26		3999	5199	5313		0.082	0.077	
6 MO	585.00	2357			3421				



Snohomish County Planning and Development Services  
 APPROVED FOR CONSTRUCTION (OR GRADING in the case of grading permits)  
 BY: \_\_\_\_\_  
 for Randolph R. Sleight, P.E., P.L.S.  
 PFN: 05-119975



4180 LIND AVE. S.W.  
 RENTON, WA 98055  
 PHONE: (425) 251-8811  
 FAX: (425) 251-8880  
 WEB SITE: PACENG.COM

**Pacific Engineering Design, LLC**  
 Civil Engineering and Planning Consultants

**CLEARVIEW JIFFY LUBE**  
 SNOHOMISH CO., WA

FOR: DARRRELL WILSON  
 COMMERCE COMPANIES  
 P.O. BOX 58187  
 RENTON, WA 98058  
 PHONE: (425) 687-6193 FAX: (206) 219-4153

PROJECT NO.: 04092  
 DRAWN BY: TLR  
 ISSUE DATE: 05-04-05  
 SHEET REV.: 10-26-05

**GRADING AND DRAINAGE PLAN**

P:\04092\CLEARVIEW JIFFY LUBE.DWG

**C03**  
 SHEET 03 OF 07