

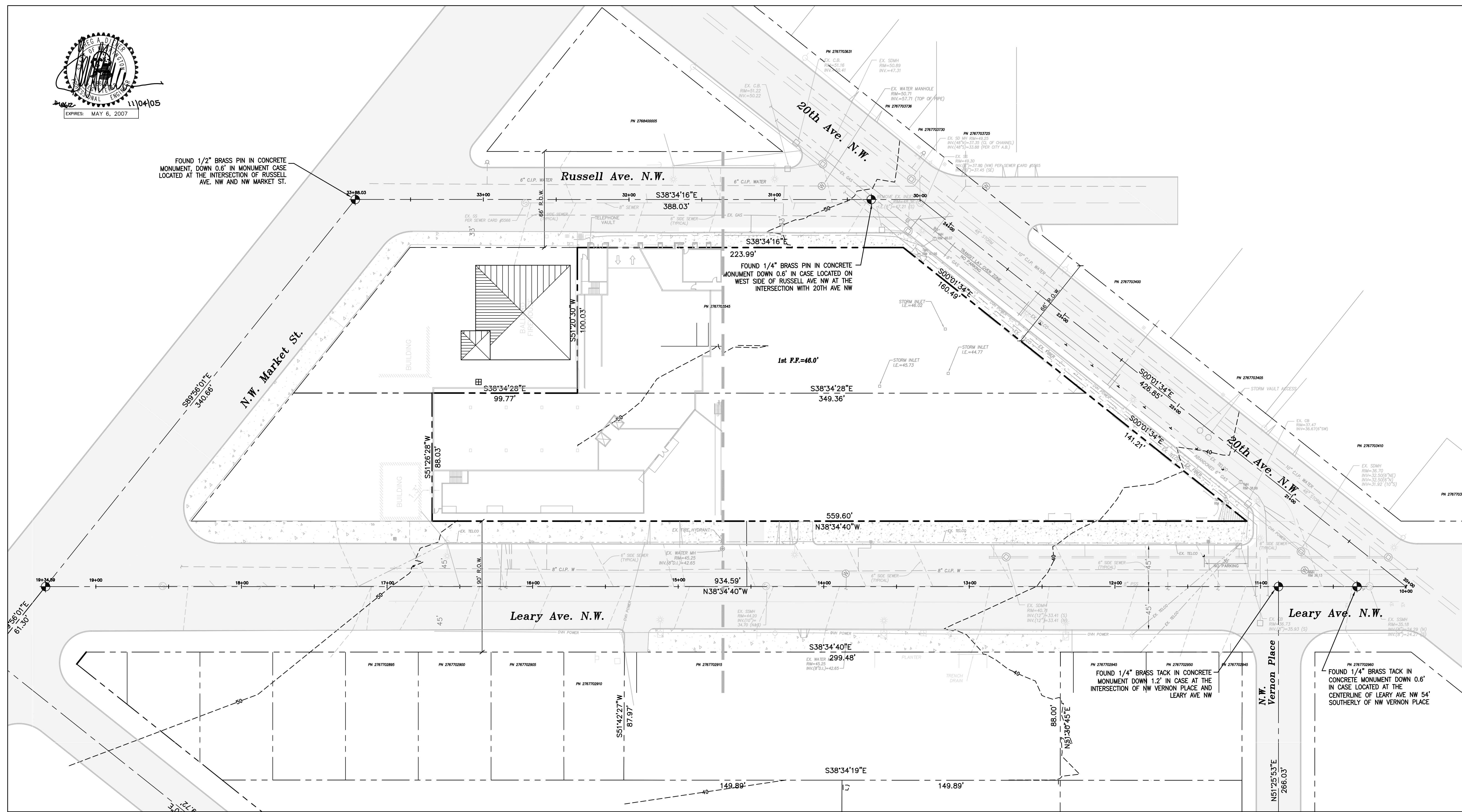
FOUND 1/2" BRASS PIN IN CONCRETE MONUMENT, DOWN 0.6" IN MONUMENT CASE LOCATED AT THE INTERSECTION OF RUSSELL AVE. NW AND NW MARKET ST.

FOUND 1/4" BRASS PIN IN CONCRETE MONUMENT DOWN 0.6" IN CASE LOCATED ON WEST SIDE OF RUSSELL AVE NW AT THE INTERSECTION WITH 20TH AVE NW

FOUND 1/4" BRASS TACK IN CONCRETE MONUMENT DOWN 1.2" IN CASE AT THE INTERSECTION OF NW VERNON PLACE AND LEARY AVE NW

FOUND 1/4" BRASS TACK IN CONCRETE MONUMENT DOWN 0.6" IN CASE LOCATED AT THE CENTERLINE OF LEARY AVE NW 54' SOUTHERLY OF NW VERNON PLACE

Vault Serial No.	Date	Mark	Nature	Made	Checked



Pacific Engineering Design, LLC
 4180 LIND AVE. S.W.
 RENTON, WA 98055
 PHONE: (425) 251-8811
 FAX: (425) 251-8880
 WEB SITE: PACENG.COM
 Civil Engineering and Planning Consultants

APPROVED BY SEATTLE TRANSPORTATION	20....
DESIGNED BY	L. LARSEN
CHECKED BY	G. DIENER
DRAWN BY	D. WHITE
CHECKED BY	G. DIENER
DESIGN REVIEW	20....
APPROVED BY SDOT STREET IMPROVEMENT PERMITTING	20....

NAME OR INITIALS AND DATE	INITIALS AND DATE
DESIGNED BY L. LARSEN	REVIEWED BY
CHECKED BY G. DIENER	PLAN REVIEW ANALYST
DRAWN BY D. WHITE	PLAN REVIEW SEC. MGR
CHECKED BY G. DIENER	RECEIVED
DESIGN REVIEW	REVISED AS-BUILT

All work done in accordance with the City of Seattle Standard Plans and Specifications in effect on the date shown above, and supplemented by Special Provisions.

City of Seattle
Seattle Department of Transportation
 WORK ORDER NO. TWS7863 SPU W/O# - NS 50118
 PERMIT NO. Z2560 APPROVED
 SCALE: H.1"=30' V.1"=30' INSPECTOR'S BOOK

Canal Station Condominiums 5440 LEARY AVE. N.W.

Leary Ave. N.W.

EXISTING CONDITIONS

SDOT PROJECT NO.	T05-2727
Vault Plan No.	
SHEET	8 OF 8